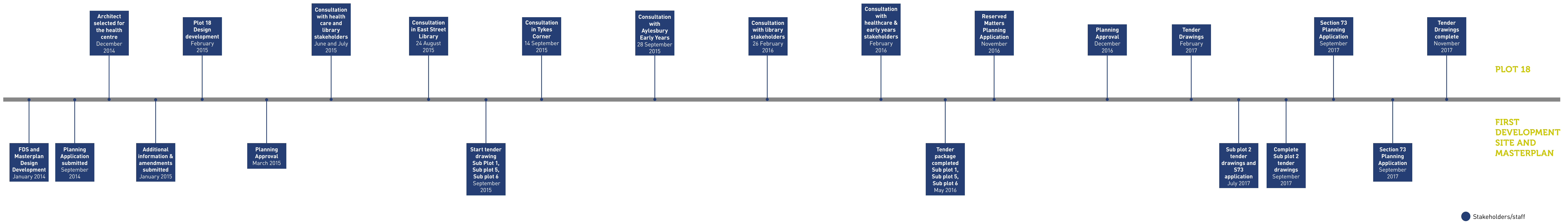


Design Timeline



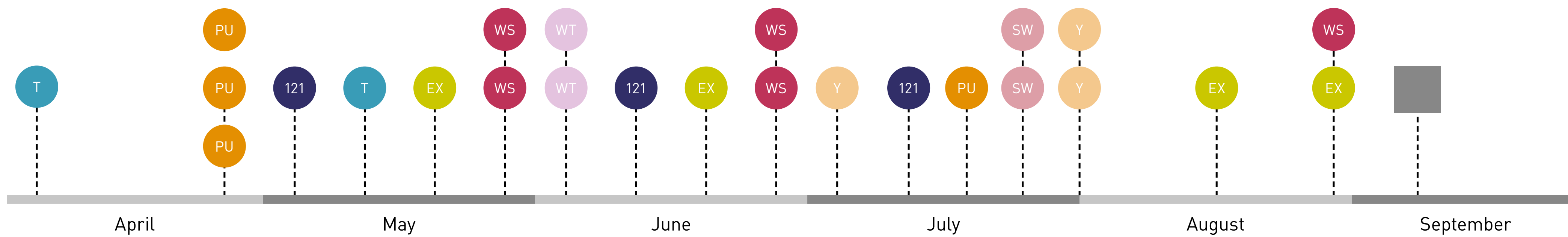
What is this exhibition about?

Notting Hill Housing and our design team began working on designing the new neighbourhood that will revitalise the current Aylesbury estate in 2013. Since then we have held 33 public consultation events to gather your feedback and integrate it into the design evolution.

The outline masterplan received planning consent in August 2015. We are now bringing forward two sites within the masterplan that have detailed consent - the First Development Site and Plot 18. This first tranche of development will deliver 962 new homes and new community facilities including a new library, health centre and GP surgery and a new early years nursery.

This exhibition aims to show you how the design has progressed since planning and to highlight some of the changes that we are proposing. These changes not only make improvements to the new buildings and public realm, but also bring forward more affordable homes, including more for social rent, early on in the programme.

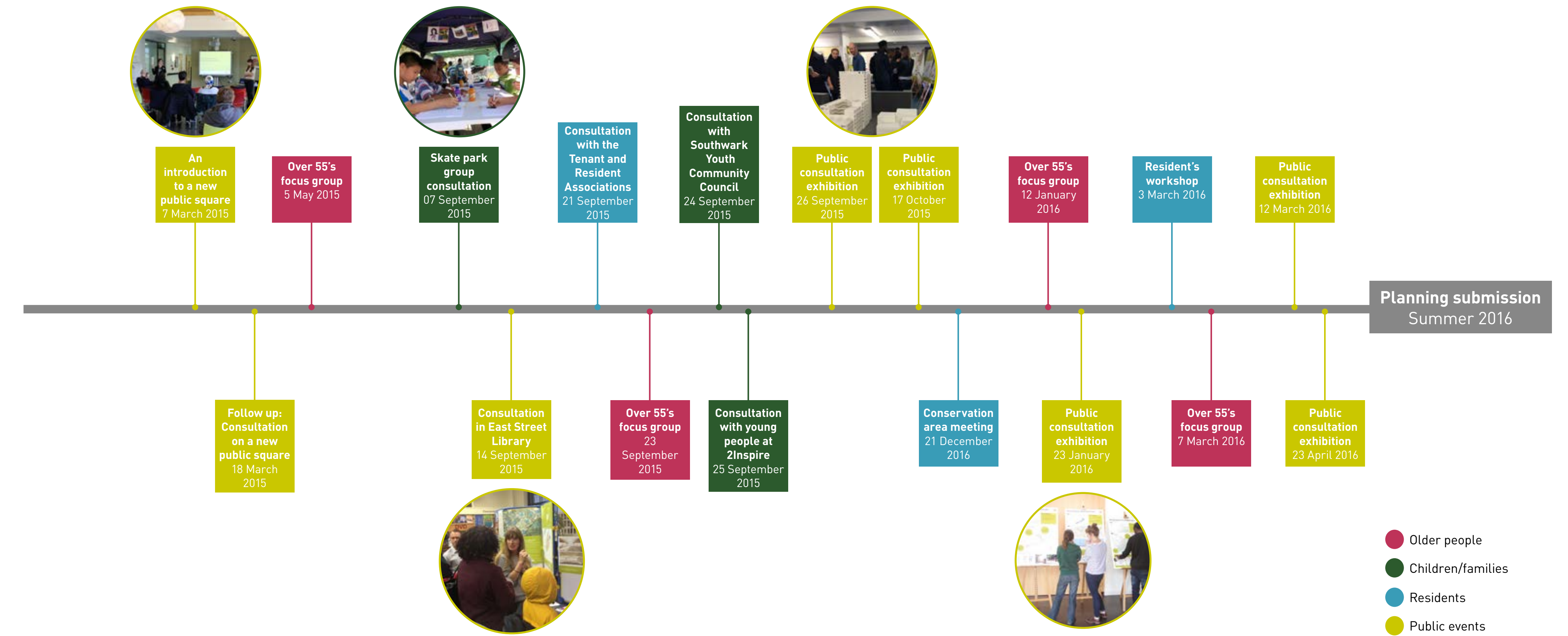
Masterplan and First Development Site consultation



Consultation timeline between March 2014 - August 2014

- EX Public exhibition
- T NHH development visit
- 1-2-1 meetings
- PU Pop-ups
- WS Public workshop/presentation
- WT Walk and Talk
- ST Stakeholder workshop
- Y Youth event
- S Submission

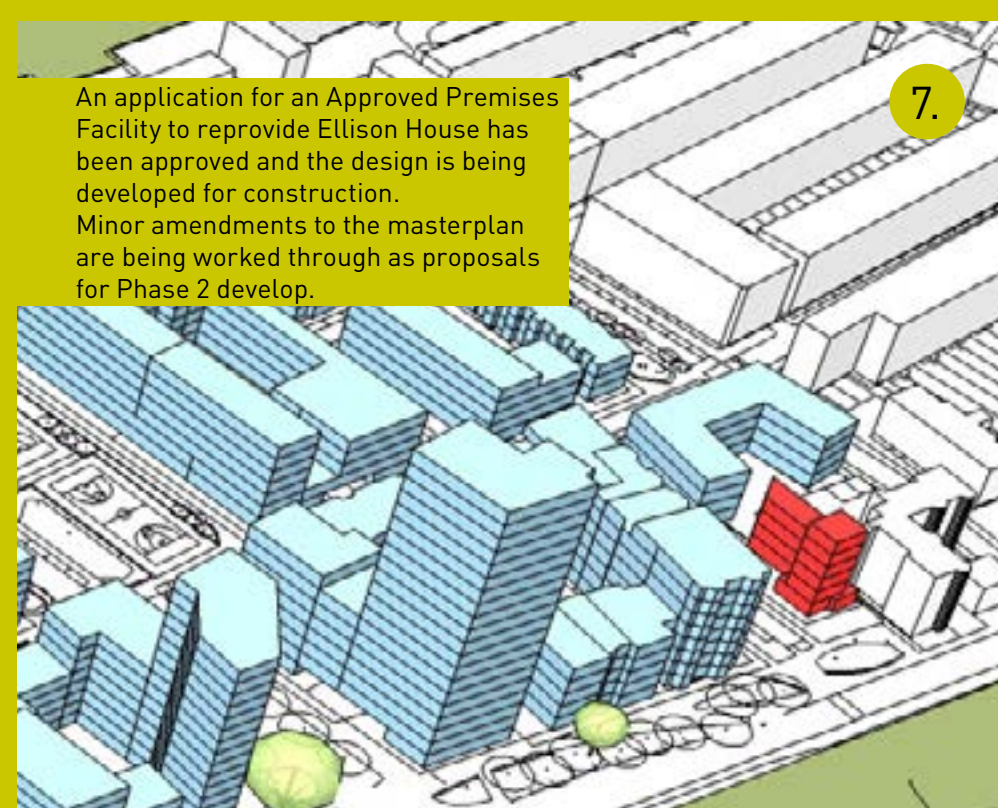
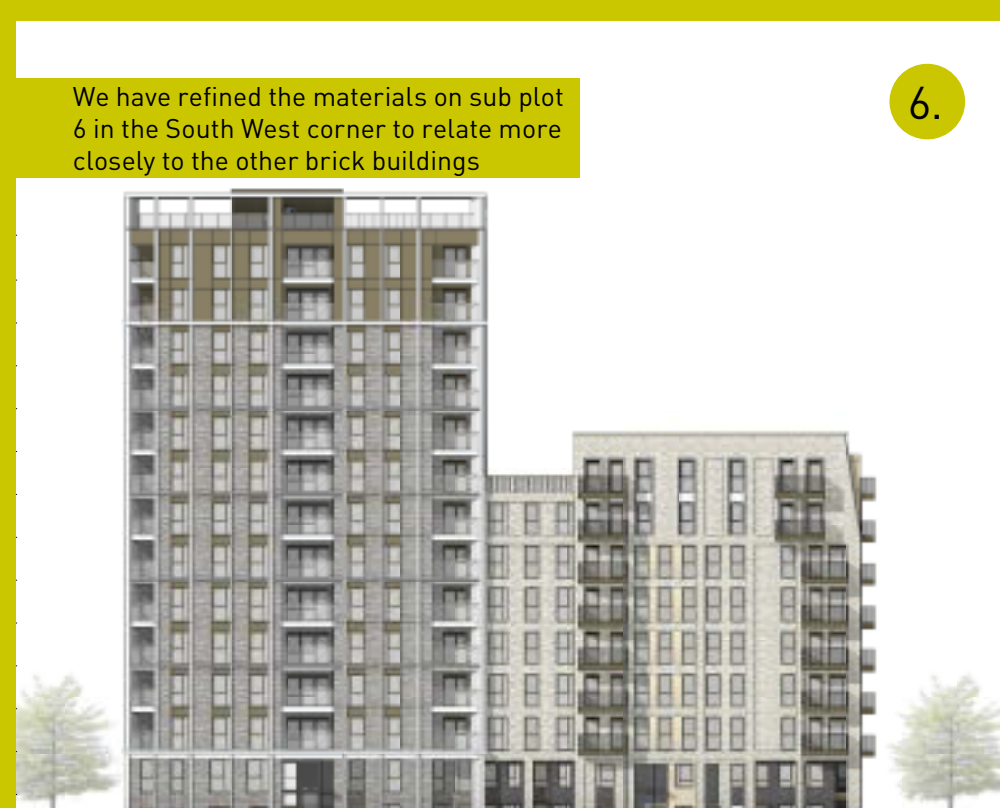
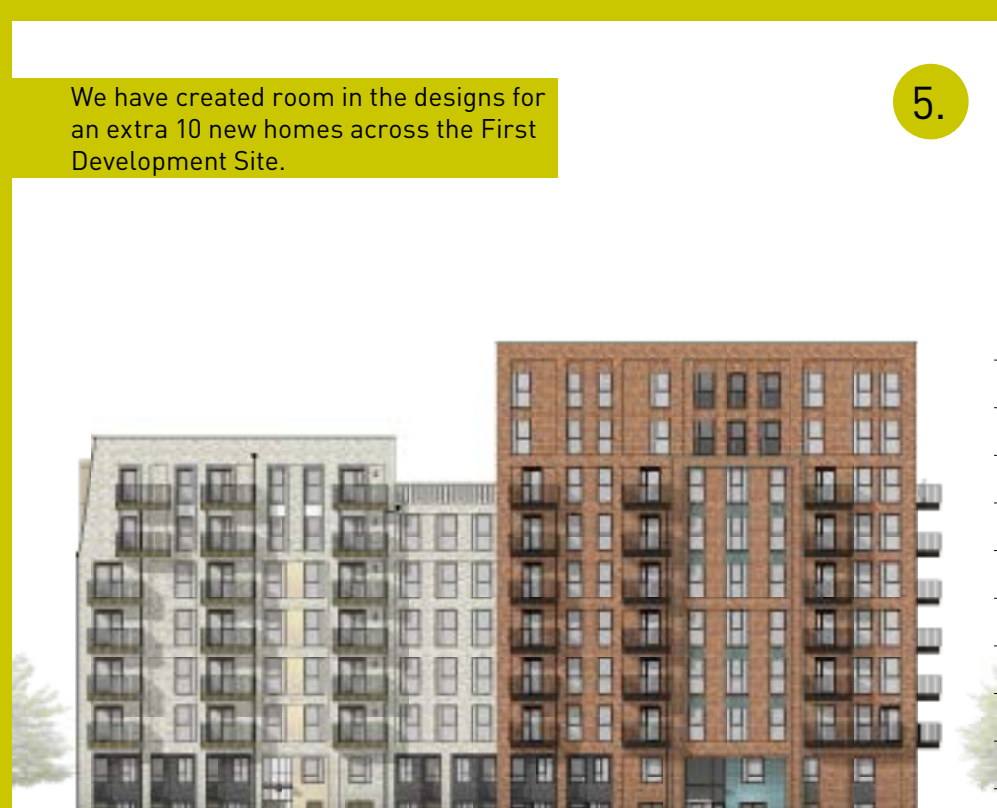
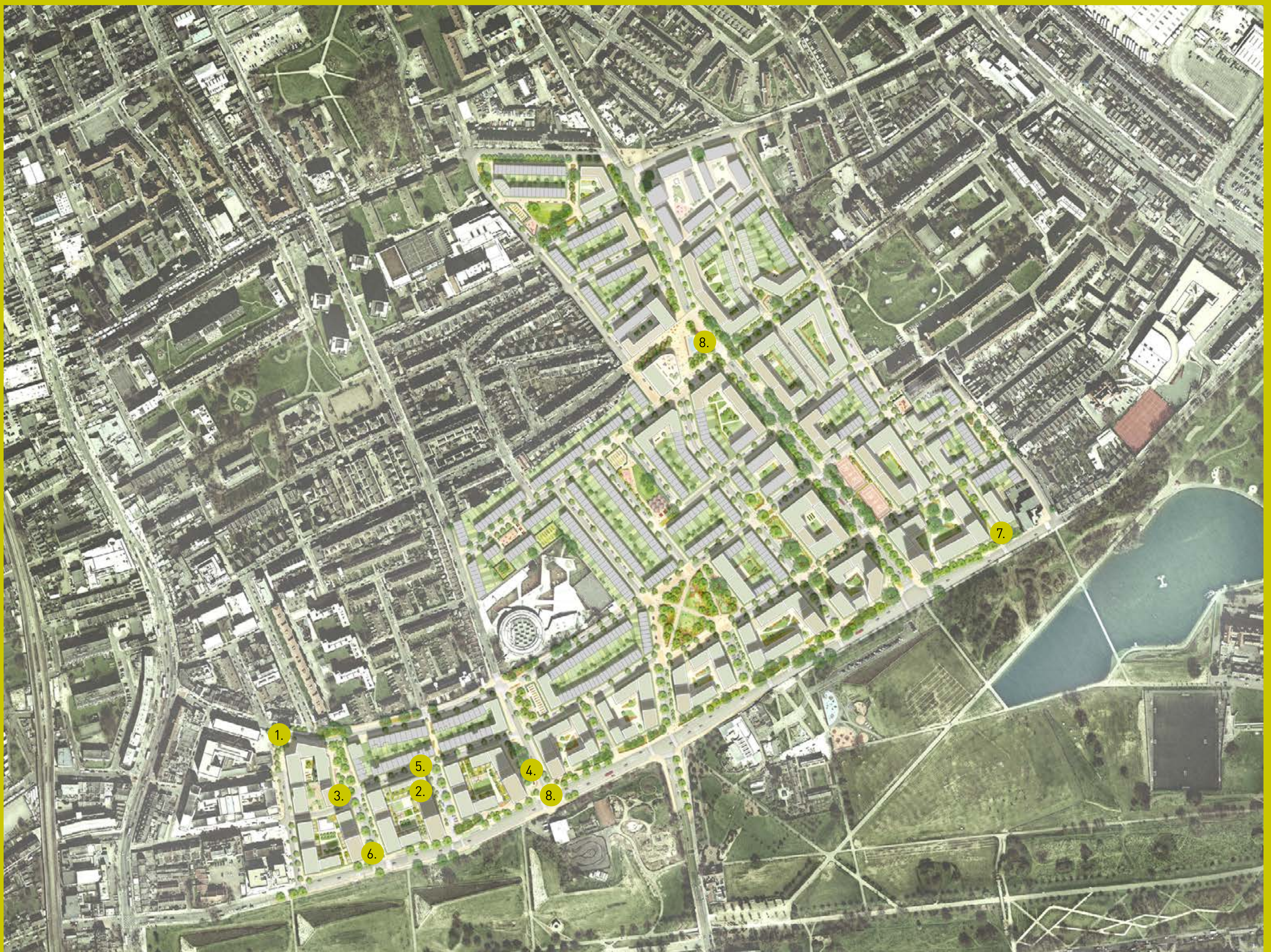
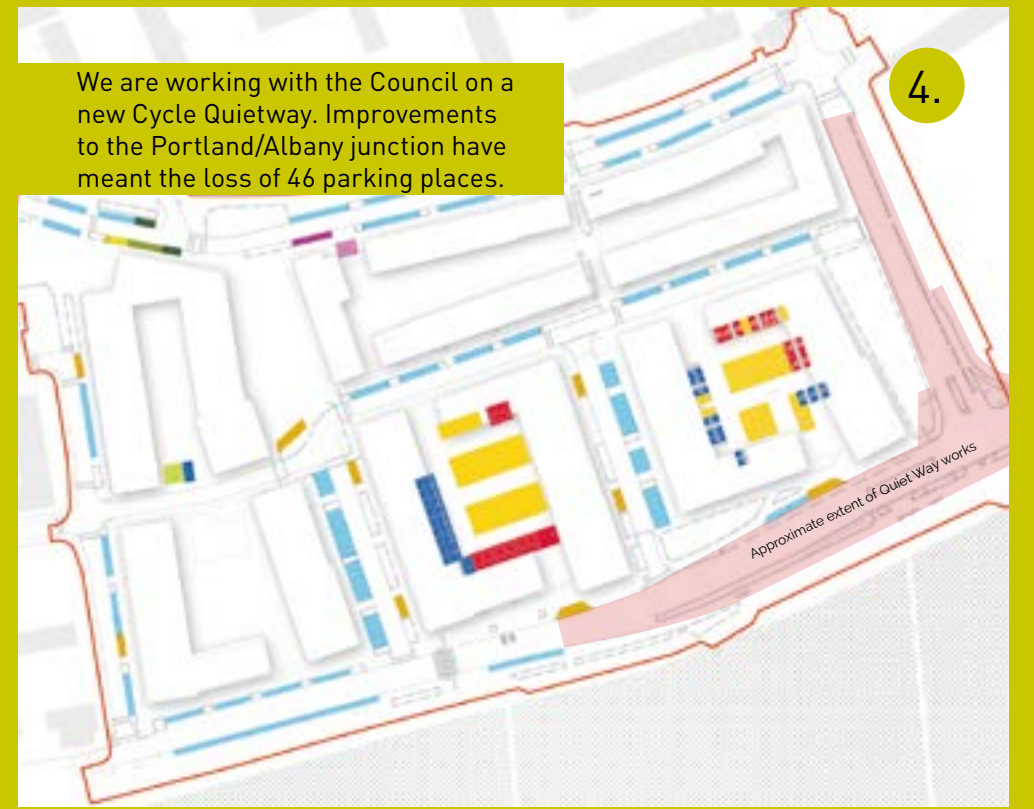
PLOT 18 Consultation



- Older people
- Children/families
- Residents
- Public events

Masterplan

A summary of the changes at masterplan level



Changes to the First Development Site

The First Development Site will deliver 840 new homes. 505 will be affordable with 294* of those let at social rents. This site will also deliver homes for extra care and for people with learning disabilities as well two new pocket parks.

*indicative mix



Changes to First Development Site sub-plot 6

Since planning consent we have removed a pressure reduction station from this location as it was no longer needed and added three new houses.

As we will be building the First development Site in two stages there will initially be a temporary energy station located where the new houses will be built.



Sub plot 06 - North Elevation - Before



Sub plot 06 - Temporary Energy Centre



Sub plot 06 - North Elevation - After



View of Sub Plot 6 from Boundary Lane

Minor changes to this elevation following changes to the flat layouts

Changes to the materials on the facade of the maisonettes

Removal of the Gas Pressure Reduction Station has allowed us to deliver three new houses - Block 6B has had to be replanned as a result.

Changes to materials on ground floor maisonettes

An additional home has been added into the gap between building 5C and 6D. Building 6C has been replanned internally.

Tenure changes

More affordable homes early on

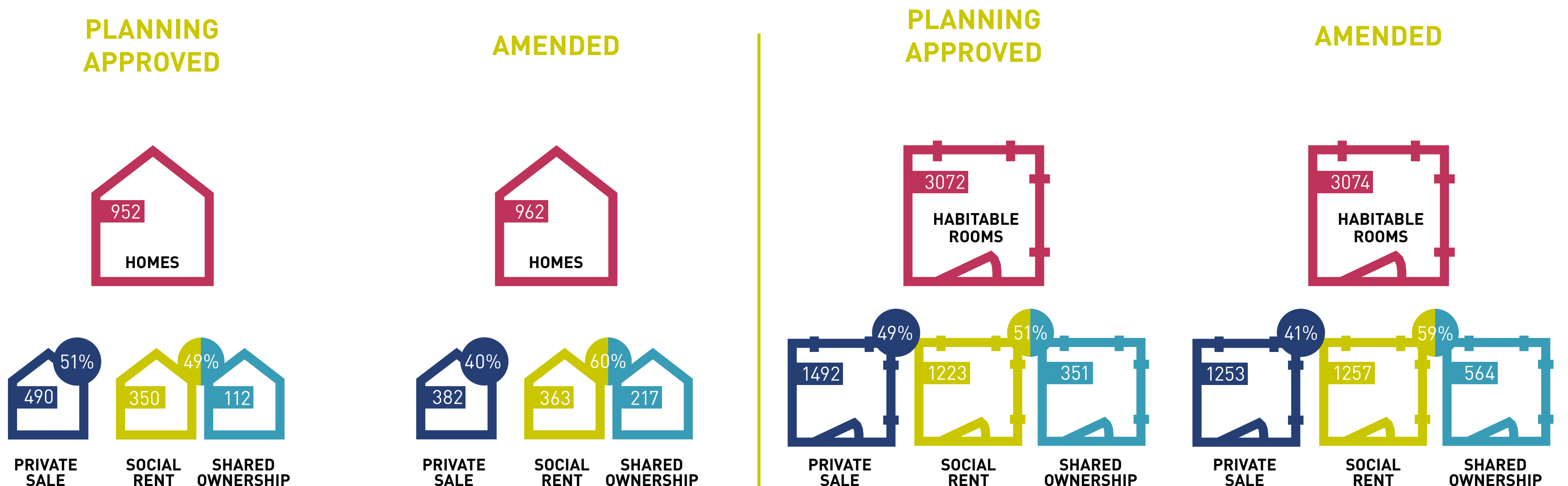
The detailed planning consents for the initial phase delivered 356 affordable homes with 264 of those at social rents. The planning amendment we are seeking will change this tenure mix to deliver 505 affordable homes of which 294 will be at social rents.*

*indicative mix

3D plan showing the proposed revised tenure mix in context



Combined FDS & Plot 18 tenure mix proposals



Plot 18 design evolution

The Health Centre will provide a new home for the Aylesbury Medical centre and the Aylesbury Health Centre currently located under Taplow. The new facility will provide both a Primary Care GP surgery and Community Care over three floors. The centre faces onto a new square and is one of a wider range of new community buildings including a Library, an Early Years facility, a pharmacy and a cafe, as well as 122 new homes.

Health centre



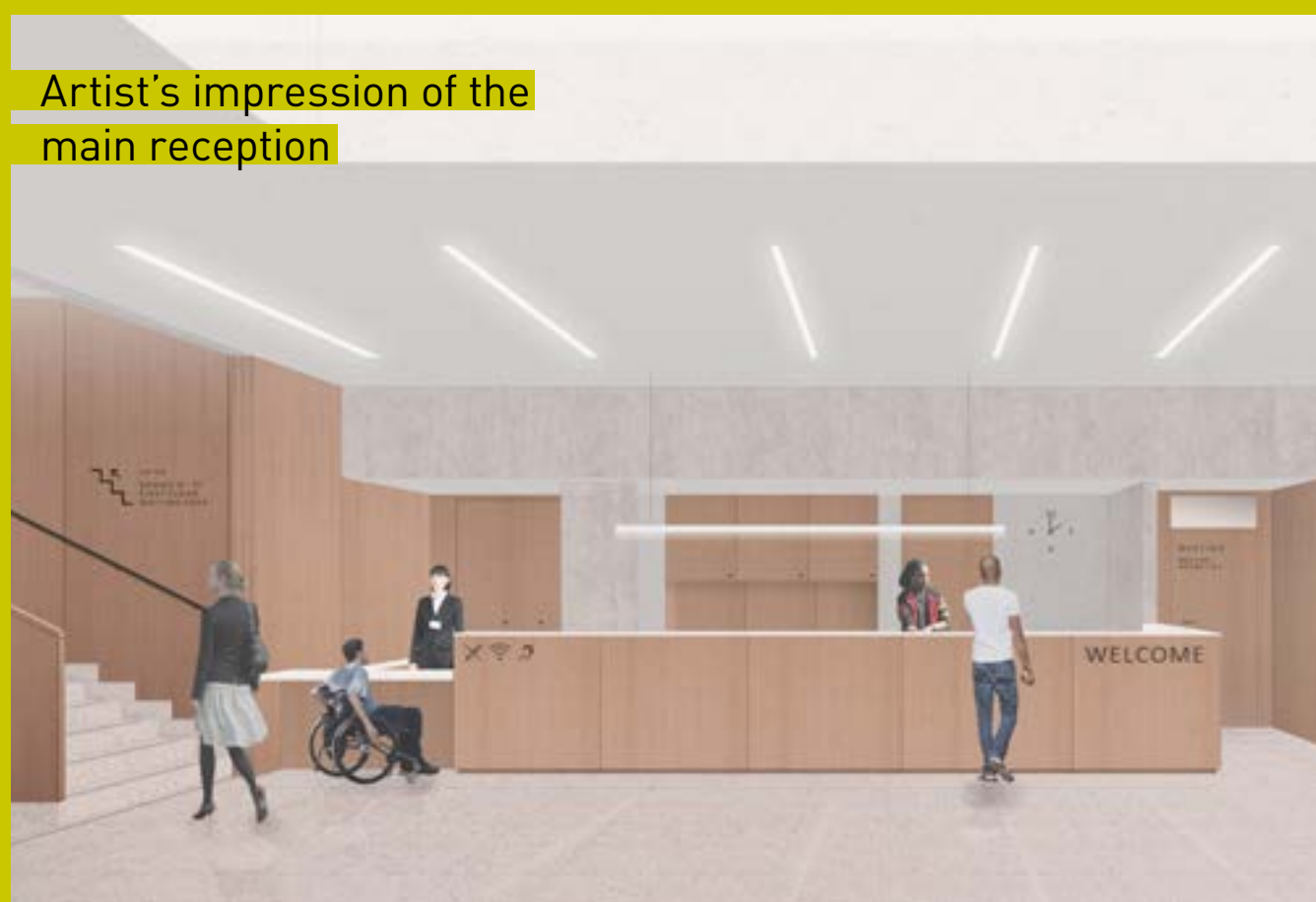
View of the health centre from Thurlow Street



Artist's impression of the Early Years Facility



Artist's impression of the main reception



View of the health centre from Thurlow Street



Artist's impression of the Early Years Facility



Artist's impression of the waiting space



Plot 18 design evolution

A new library will form a key part of the community hub. It is more than twice the size of the East Street library it will replace, and will also house community facilities.

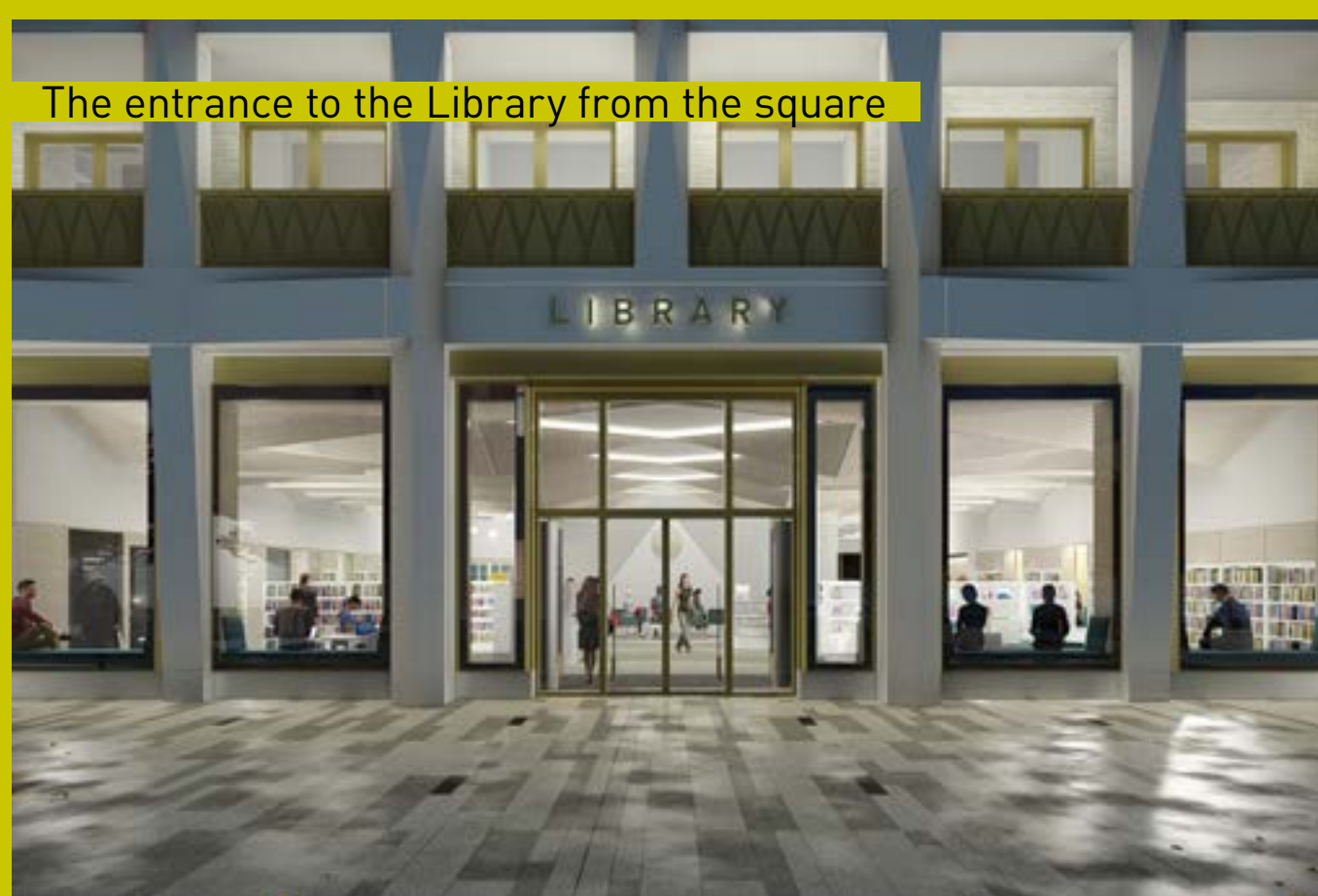
East Street library will remain open until this new library service opens to the public.

Library

The view from the entrance



The entrance to the Library from the square



The reception desk



The view from the square



Children's story room



Window seating

