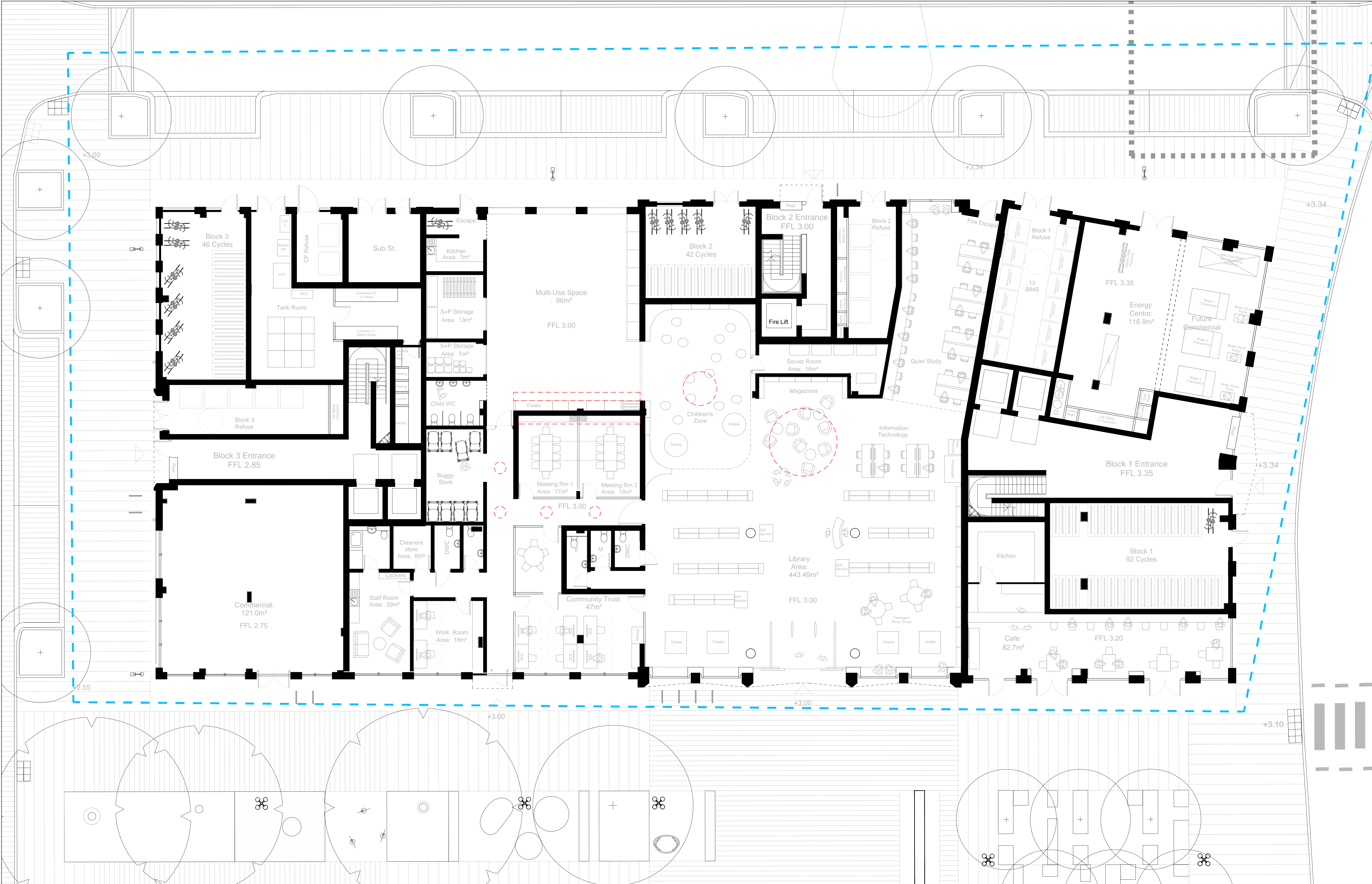
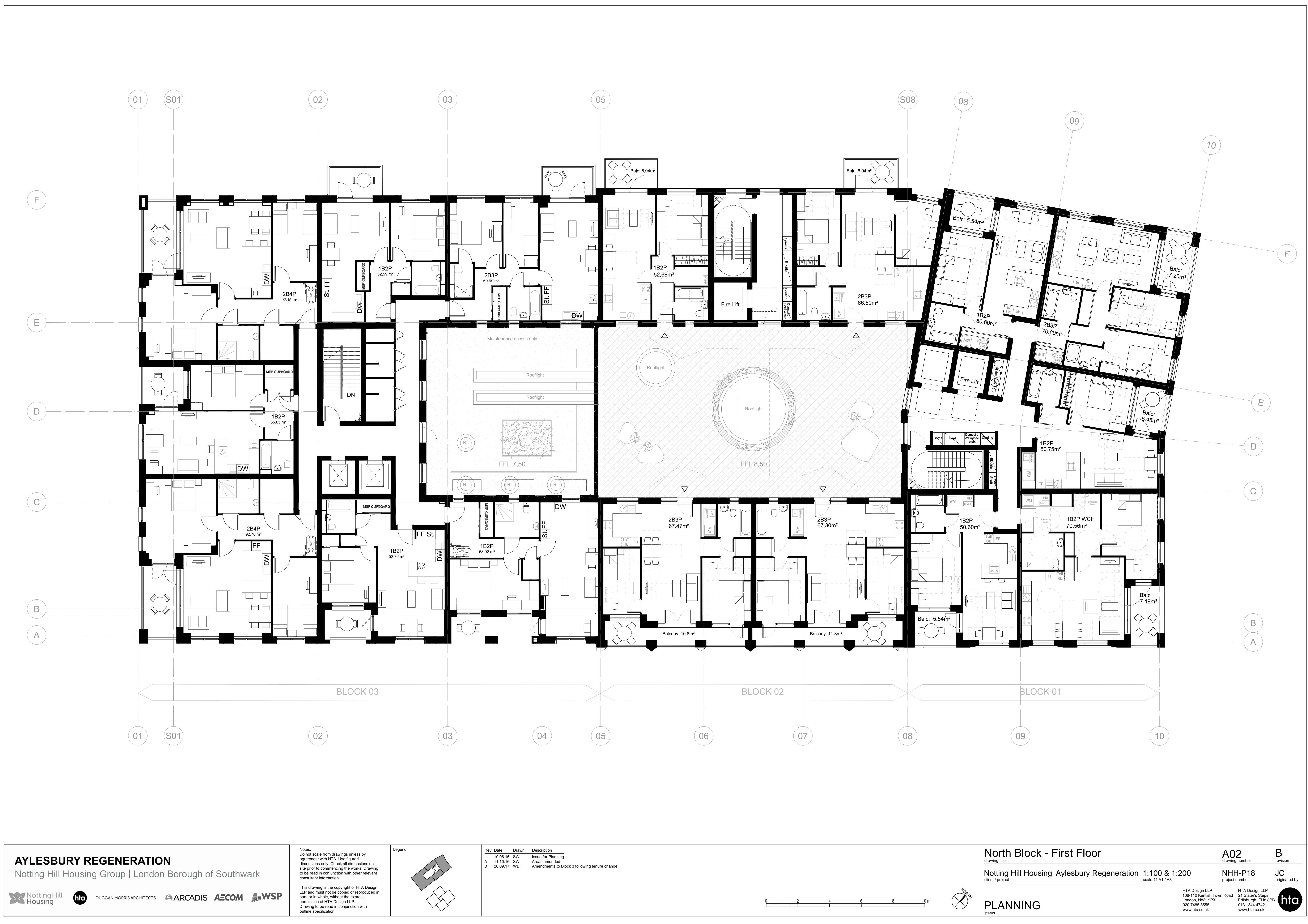


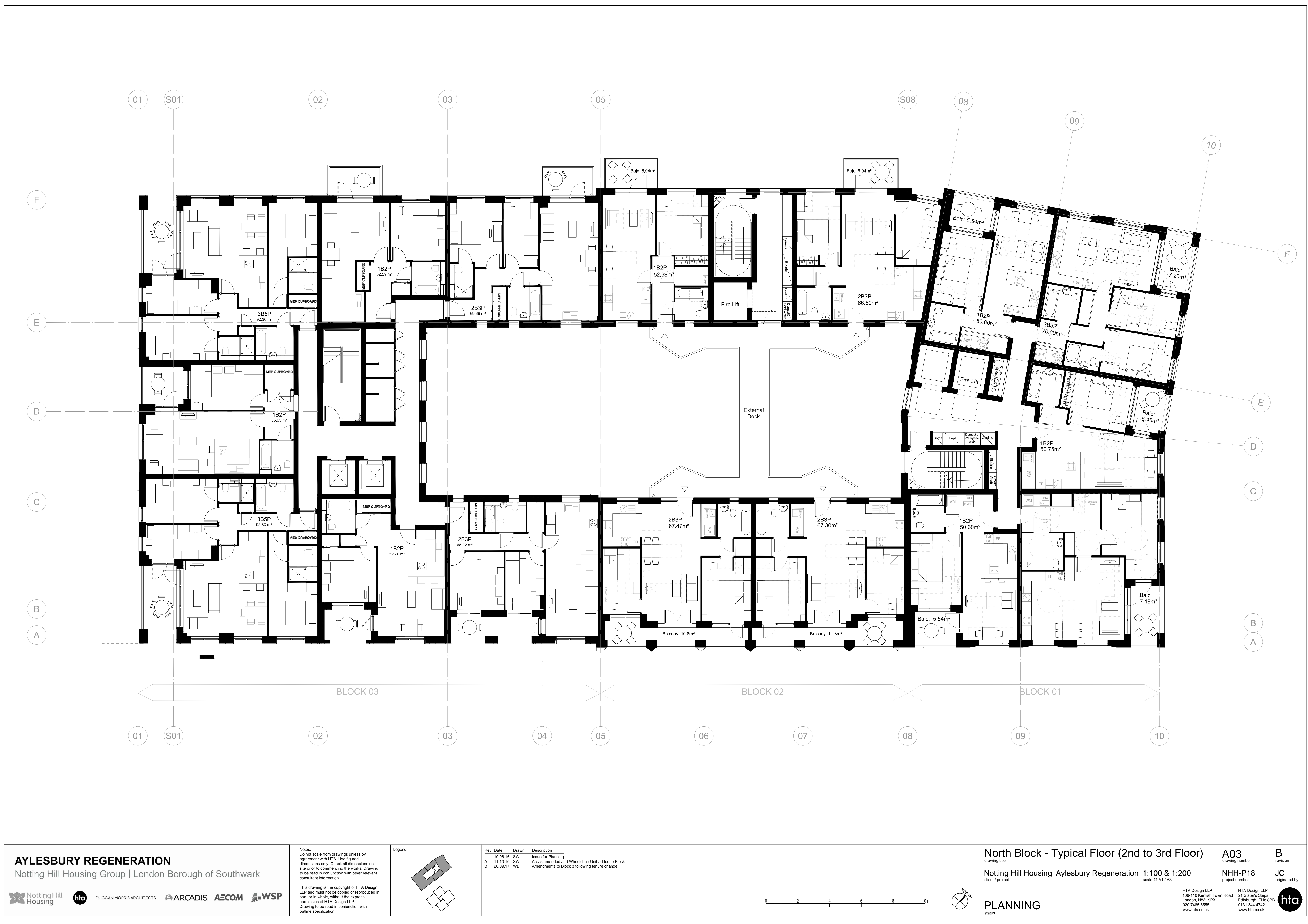
Aylesbury Estate Regeneration
Plot 18- Drawing List
Planning September 2017

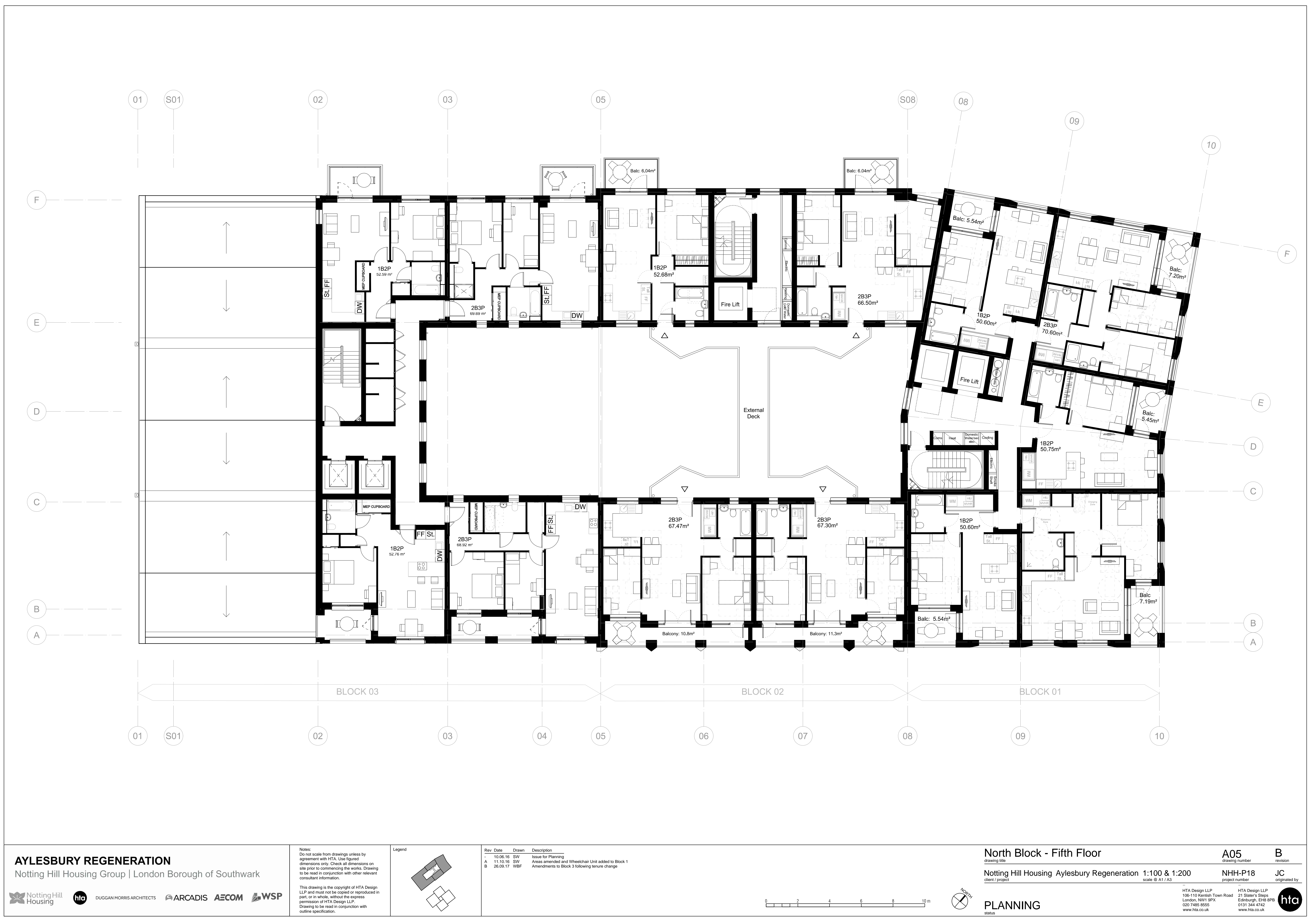


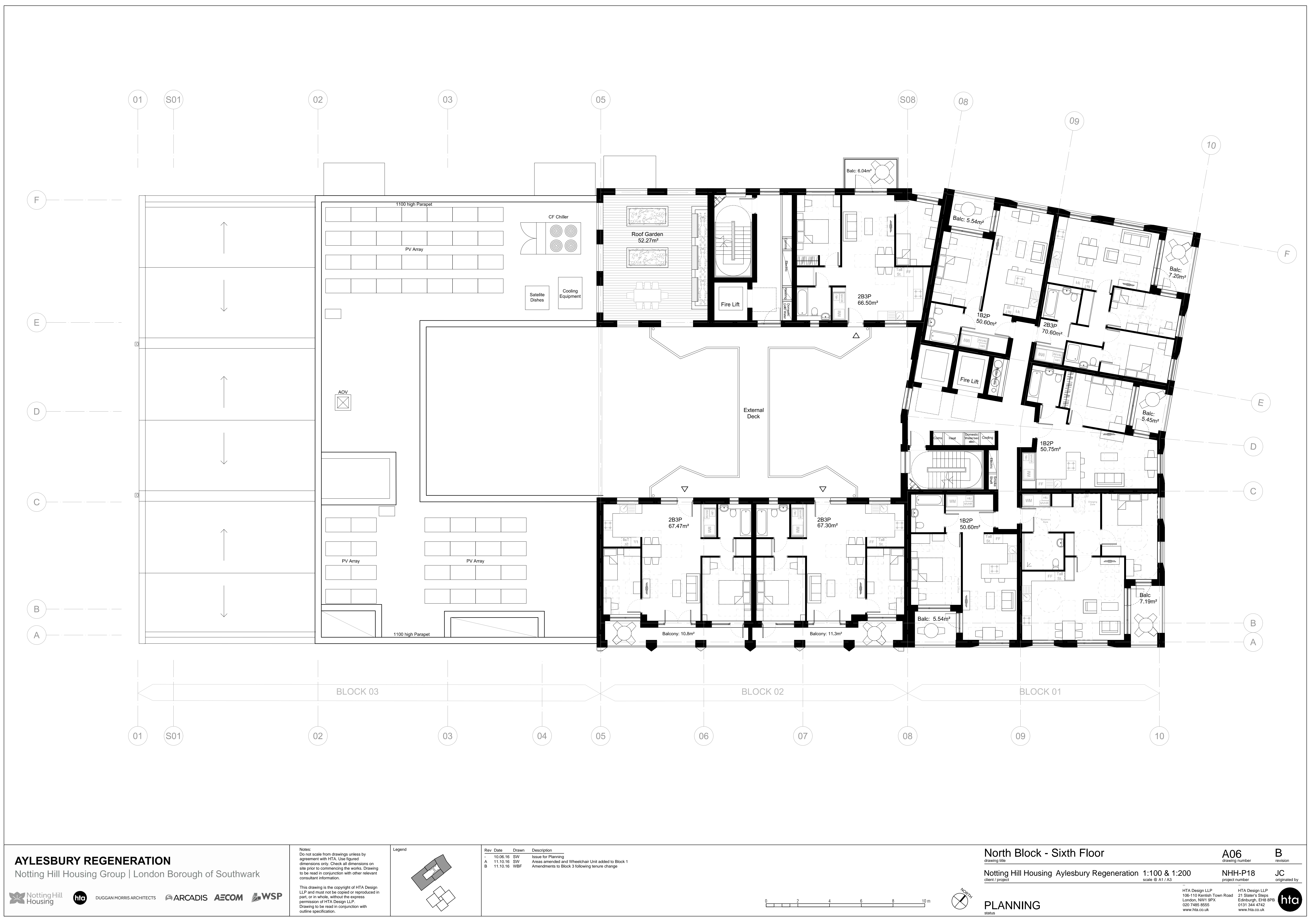
Drawing Number		Scale	Page	Drawing Description	Planning Consent Nov 16 Rev	S73 App. Sept 17 Rev
Location	NHH-P18 L 01	1:1000	A3	Location Plan- Existing	-	
	NHH-P19 L 02	1:1000	A3	Location Plan- Proposed with existing context	A	
	NHH-P18 L 03	1:1000	A3	Location Plan- Proposed with Indicative Future Masterplan	-	
Site	NHH-P18 L 04	1:250/ 1:500	A1/A3	Site Plan- Ground Flr- Proposed with existing context	C	
Parameter Compliance	NHH-P18 L 07	1:250	A1	Parameter Compliance - Ground Floor	-	
	NHH-P18 L 08	1:250	A1	Parameter Compliance - Basement	-	
Site Elevations	NHH-P18 L 11	1:250/ 1:500	A1/ A3	North-East & South-West Site Elevations	-	
	NHH-P18 L 12	1:250/ 1:500	A1/ A3	South-East & North West Site Elevations	-	A
Sub-plot 18A- North Block						
Plans	NHH-P18 A 01	1:100/ 1:200	A1/ A3	Ground Plan	C	D
	NHH-P18 A 02	1:100/ 1:200	A1/ A3	First Floor	A	B
	NHH-P18 A 03	1:100/ 1:200	A1/ A3	Typical floor Plan (2nd-3rd Floor)	A	B
	NHH-P18 A 04	1:100/ 1:200	A1/ A3	Fourth floor Plan	A	B
	NHH-P18 A 05	1:100/ 1:200	A1/ A3	Fifth floor Plan	A	B
	NHH-P18 A 06	1:100/ 1:200	A1/ A3	Sixth Floor Plan	A	B
	NHH-P18 A 07	1:100/ 1:200	A1/ A3	Typical Upper Floor (7th-14th Floor)	A	
	NHH-P18 A 08	1:100/ 1:200	A1/ A3	Block 1 Roof Terrace	-	
Elevations	NHH-P18 A 09	1:100/ 1:200	A1/ A3	Roof Plan	-	
	NHH-P18 A 20	1:100/ 1:200	A1/ A3	North East Elevation (Block 1)	-	
	NHH-P18 A 21	1:100/ 1:200	A1/ A3	South East Elevation	-	A
	NHH-P18 A 22	1:100/ 1:200	A1/ A3	South West Elevation (Block 3)	-	A
	NHH-P18 A 23	1:100/ 1:200	A1/ A3	North West Elevation	-	A
	NHH-P18 A 24	1:100/ 1:200	A1/ A3	Courtyard Elevations	-	
Sections	NHH-P18 A 40	1:100/ 1:200	A1/ A3	Short Section	-	
	NHH-P18 A 41	1:100/ 1:200	A1/ A3	Long Section	-	A
Detailed Section	NHH-P18 A 60	1:50/ 1/100	A1/ A3	Detailed Elevation & Section- Block 1	-	
	NHH-P18 A 61	1:50/ 1/100	A1/ A3	Detailed Elevation & Section-Block 2 Library Façade	-	
Wheelchair Units	NHH-P18 A 200	1:50	A3	2B 4P PR/INT Wheelchair Unit- Block 1	-	
	NHH-P18 A 201	1:50	A3	1B 2P Wheelchair Unit- Block 3	-	
	NHH-P18 A 202	1:50	A3	2B 4P Wheelchair Unit- Block 3	-	A
Sub-plot 18B- South Block						
Plans	NHH-P18 B 01	1:100/ 1:200	A1/ A3	Basement	A	
	NHH-P18 B 02	1:100/ 1:200	A1/ A3	Ground Floor	B	
	NHH-P18 B 03	1:100/ 1:200	A1/ A3	First Floor	A	
	NHH-P18 B 04	1:100/ 1:200	A1/ A3	Second Floor	A	
	NHH-P18 B 05	1:100/ 1:200	A1/ A3	Third Floor	A	
Elevations	NHH-P18 B 06	1:100/ 1:200	A1/ A3	Roof Plan	A	
	NHH-P18 B 20	1:100/ 1:200	A1/ A3	North East Elevation (Block 1)	B	
	NHH-P18 B 21	1:100/ 1:200	A1/ A3	South East Elevation	B	
	NHH-P18 B 22	1:100/ 1:200	A1/ A3	North West Elevation	B	
	NHH-P18 B 23	1:100/ 1:200	A1/ A3	South West Elevation (Block 3)	B	
	NHH-P18 B 40	1:100/ 1:200	A1/ A3	Section	A	
Sections	NHH-P18 B 41	1:100/ 1:200	A1/ A3	Section	A	
	NHH-P18 B 42	1:100/ 1:200	A1/ A3	Section	A	
	NHH-P18 B 43	1:100/ 1:200	A1/ A3	Section	A	
Landscape	NHH-P18 L 2900	1:250	A1	Plot-18 Public Open Space Landscape Illustrative Masterplan	C	D
	NHH-P18 L 2901	1:100	A1	Public Open Space Cross-Sections	-	
	NHH-P18 SK 161116	1/250	A1	Cycle Stand Provision	A	
Reports	NHH-P18 R 01	N/A	A3	Design and Access Statement (Inc. Landscape)	-	A
				S73 Annotated Design Report		-











North Block - South East Elevation

A21
drawing number

A
revision

Notting Hill Housing Aylesbury Regeneration 1:100 & 1:200
client / project scale @ A1 / A3

NHH-P18 SW
project number originated by

PLANNING

status

HTA Design LLP
106-110 Kentish Town Road
London, NW1 9PX
020 7485 8555
www.hta.co.uk

HTA Design LLP
21 Slater's Steps
Edinburgh, EH8 8PB
0131 344 4742
www.hta.co.uk

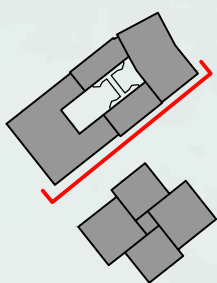


Legend

Rev Date Drawn Description
A 11.09.17 SW Issue for Planning
Tenure Change

Notes:
Do not scale from drawings unless by agreement with HTA. Use figured dimensions only.
Check all dimensions on site prior to commencing the works. Drawing to be read in
conjunction with other relevant consultant information.

This drawing is the copyright of HTA Design LLP and must not be copied or reproduced in
part, or in whole, without the express permission of HTA Design LLP.
Drawing to be read in conjunction with outline specification.



AYLESBURY REGENERATION

Notting Hill Housing Group | London Borough of Southwark



DUGGAN MORRIS ARCHITECTS



Materials Key

- 1.1 Brick- Type 1
- 1.2 Balustrade- Glass
- 1.3 Entrance Canopy & Surround- Polished white reconstituted stone

- 2.1 Columns/ Fascia- Polished white reconstituted stone
- 2.2 Brick- Type 2
- 2.3 Balustrade- Decorative pressed metal panel, PPC finish, Colour RAL 1012
- 2.4 Balustrade- Painted metal vertical railings, PPC finish, Colour RAL 1012

- 3.1 Brick Type 3 (Block 3, Six Storeys)
- 3.2 Brick Type 4 (Block 3, four Storeys)
- 3.3 Slate finish roof
- 3.4 Balustrade- Metal vertical railings, Powder coated finish, Colour RAL 1012
- 3.5 Moulded Entrance Surround- Polished white reconstituted stone
- 3.6 Perforated Brick Cornice- Brick Type 3
- 3.7 Vertical Brick header
- 3.8 Vertical Brick verge detail
- 3.9 Metal fascia- Powder coated finish
- 3.10 Painted metal window surround, colour white

- 4.1 Windows- Aluminium composite, Colour RAL 1012
- 4.2 Cill/Header- White Reconstituted Stone
- 4.3 Weathering Brick
- 4.4 Metal fascia- Powder coated finish, Colour RAL 1012
- 4.5 Metal Cladding- Metal, Powder coated Finish, Colour RAL 1012
- 4.6 Doors to refuse/cycle stores- Metal, PPC finish, Colour RAL 1012
- 4.7 Louvre- PPC Finish, Colour RAL 1012
- 4.8 Temporary Energy centre flue- Stainless Steel

MAXIMUM PARAMETER HEIGHT 34.10m

28.35

24.65

17.60

+2.75

+3.20

56.05

MAXIMUM PARAMETER HEIGHT 56.15m

53.55

ⓘ TERRACE
FFL 52950m

ⓘ LEVEL 14
FFL 49450m

ⓘ LEVEL 13
FFL 46300m

ⓘ LEVEL 12
FFL 43150m

ⓘ LEVEL 11
FFL 40000m

ⓘ LEVEL 10
FFL 36850m

ⓘ LEVEL 09
FFL 33700m

ⓘ LEVEL 08
FFL 30550m

ⓘ LEVEL 07
FFL 27400m

ⓘ LEVEL 06
FFL 24250m

ⓘ LEVEL 05
FFL 21100m

ⓘ LEVEL 04
FFL 17950m

ⓘ LEVEL 03
FFL 14800m

ⓘ LEVEL 02
FFL 11650m

ⓘ LEVEL 01
FFL 8500m

3.1

3.3

3.7

3.2

3.4

3.10

4.1

4.2

3.9

4.3

4.8

4.5

4.4

1.1

1.2

4.1

4.2

2.1

2.2

2.3

1.3

4.3

Materials Key

- 1.1 Brick- Type 1
- 1.2 Balustrade- Glass
- 2.2 Brick- Type 2
- 3.1 Brick Type 3 (Block 3, Six Storeys)
- 3.2 Brick Type 4 (Block 3, four Storeys)
- 3.4 Balustrade- Metal vertical railings, Powder coated finish, Colour RAL 1012
- 3.5 Moulded Entrance Surround- Polished white reconstituted stone
- 3.6 Perforated Brick Cornice- Brick Type 3
- 3.7 Vertical Brick header
- 3.8 Vertical Brick verge detail
- 3.9 Metal fascia- Powder coated finish
- 4.1 Windows- Aluminium composite, Colour RAL 1012
- 4.2 Cill/Header- White reconstituted stone
- 4.3 Weathering Brick- Type 5
- 4.4 Metal fascia- Powder coated finish, Colour RAL 1012
- 4.5 Metal Cladding- Metal, Powder coated Finish, Colour RAL 1012
- 4.6 Doors to refuse/cycle stores- Metal, PPC finish, Colour RAL 1012
- 4.8 Temporary Energy centre flue- Stainless Steel



North Block - South West Elevation

A22
drawing number

A
revision

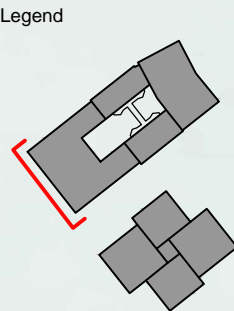
Notting Hill Housing Aylesbury Regeneration 1:100 & 1:200
client / project scale @ A1 / A3

NHH-P18 SW
project number originated by

PLANNING

Notes:
Do not scale from drawings unless by agreement with HTA. Use figured dimensions only.
Check all dimensions on site prior to commencing the works. Drawing to be read in
conjunction with other relevant consultant information.

This drawing is the copyright of HTA Design LLP and must not be copied or reproduced in
part, or in whole, without the express permission of HTA Design LLP.
Drawing to be read in conjunction with outline specification.



Rev	Date	Drawn	Description
-	10.06.16	SW	Issue for Planning
A	11.09.17	SW	Tenure Change

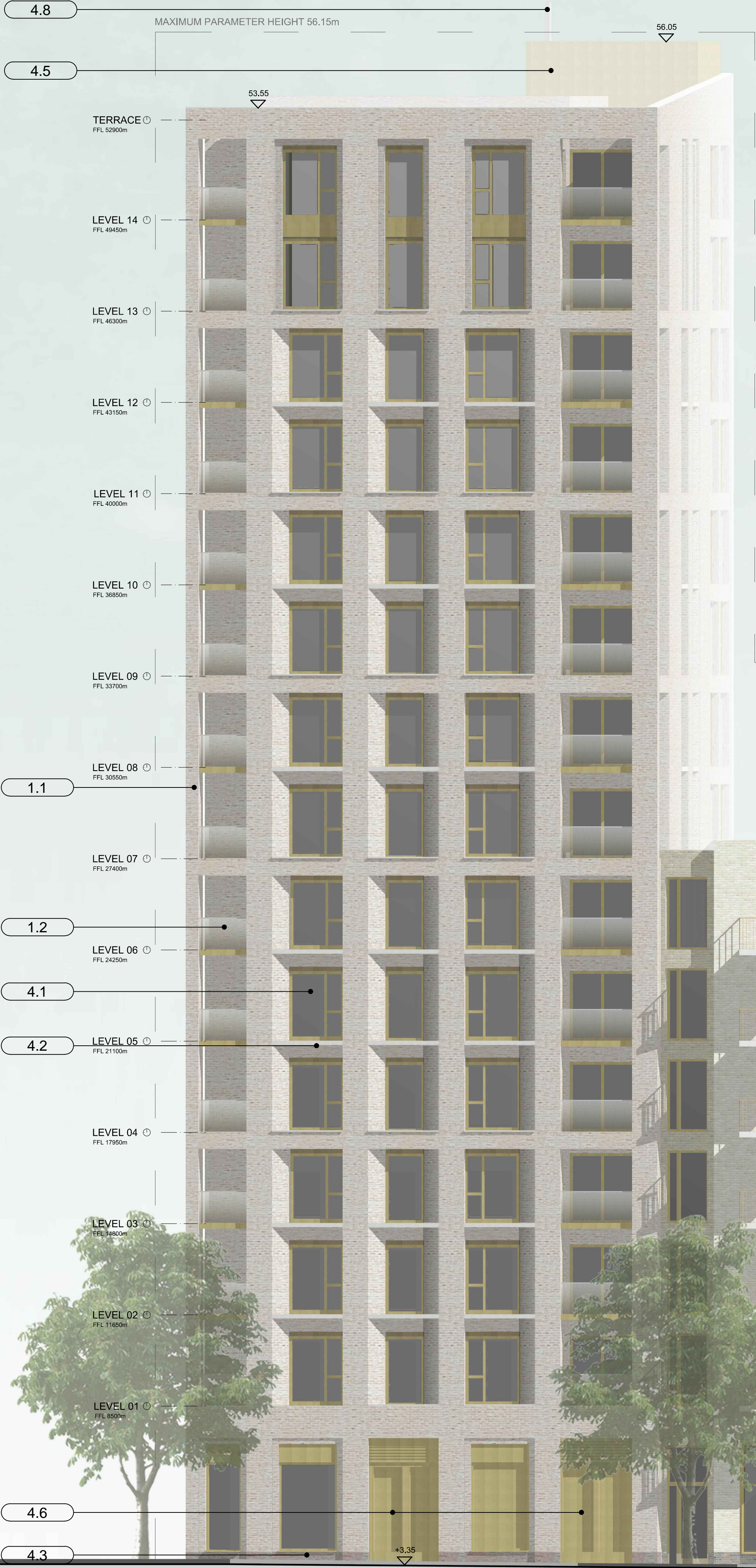
AYLESBURY REGENERATION

Notting Hill Housing Group | London Borough of Southwark



DUGGAN MORRIS ARCHITECTS





North Block - North West Elevation

drawing title

A23

drawing number

A

revision

Notting Hill Housing Aylesbury Regeneration

client / project

1:100 & 1:200

scale @ A1 / A3

NHH-P18 SW

project number

originated by

HTA Design LLP
21 Slater's Shop
London, NW1 9PX
020 7485 8555
www.hta.co.uk

HTA Design LLP
21 Slater's Shop
Edinburgh, EH8 8PB
0131 344 4742
www.hta.co.uk

hta

PLANNING

status

Notes:

Do not scale from drawings unless by agreement with HTA. Use figured dimensions only. Check all dimensions on site prior to commencing the works. Drawing to be read in conjunction with other relevant consultant information.

Legend

Rev

Date

Drawn

Description

-

10.06.16

SW

Issue for Planning

A

11.09.17

SW

Tenure Change

This drawing is the copyright of HTA Design LLP and must not be copied or reproduced in part, or in whole, without the express permission of HTA Design LLP. Drawing to be read in conjunction with outline specification.

AYLESBURY REGENERATION

Notting Hill Housing Group | London Borough of Southwark



Materials Key

- 1.1 Brick- Type 1
- 1.2 Balustrade- Glass
- 1.3 Entrance Canopy & Surround- Polished white reconstituted stone

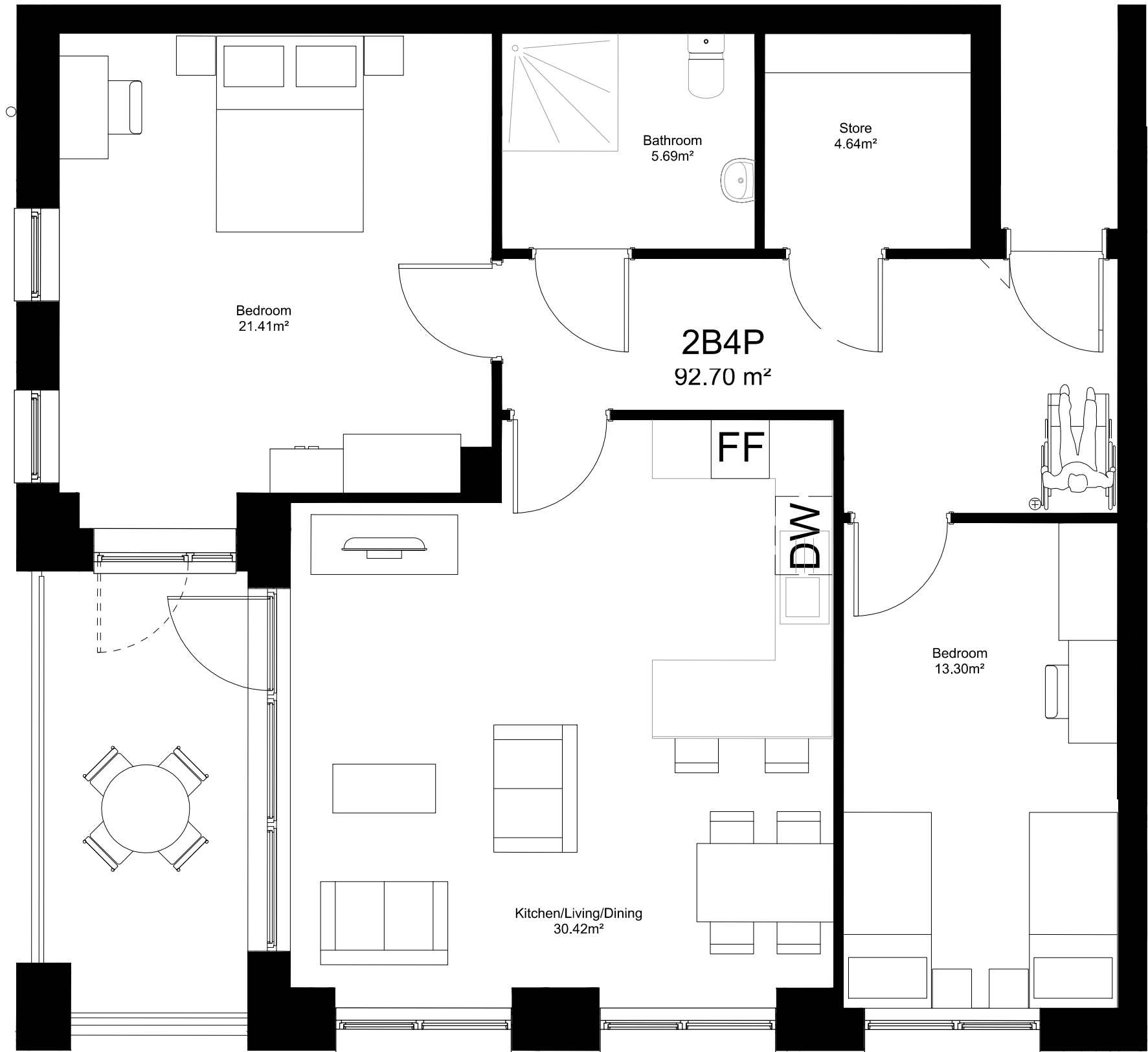
- 2.1 Columns/ Fascia- Polished white reconstituted stone
- 2.2 Brick- Type 2
- 2.3 Balustrade- Decorative pressed metal panel, PPC finish, Colour RAL 1012
- 2.4 Balustrade- Painted metal vertical railings, PPC finish, Colour RAL 1012

- 3.1 Brick Type 3 (Block 3, Six Storeys)
- 3.2 Brick Type 4 (Block 3, four Storeys)
- 3.3 Slate Roof
- 3.4 Balustrade- Metal vertical railings, Powder coated finish, Colour RAL 1012
- 3.5 Moulded Entrance Surround- Polished white reconstituted stone
- 3.6 Perforated Brick Cornice- Brick Type 3
- 3.7 Vertical Brick header
- 3.8 Vertical Brick verge detail
- 3.9 Metal fascia- Powder coated finish
- 3.10 Painted metal window surround, colour white

- 4.1 Windows- Aluminium composite, Colour RAL 1012
- 4.2 Cill/Header- White Reconstituted Stone
- 4.3 Weathering Brick- Type 5
- 4.4 Metal fascia- Powder coated finish, Colour RAL 1012
- 4.5 Metal Cladding- Metal, Powder coated Finish, Colour RAL 1012
- 4.6 Doors to refuse/cycle stores- Metal, PPC finish, Colour RAL 1012
- 4.7 Louvre- PPC Finish, Colour RAL 1012
- 4.8 Temporary Energy centre flue- Stainless Steel



A floor plan of a house with a red line indicating a section cut. The house has a complex layout with multiple rooms and a central hallway. The red line is drawn horizontally across the middle of the plan, starting from the left edge and ending at the right edge, passing through several rooms and the central hallway.



Rev	Date	Drawn	Description
-	10.06.16	SW	Issue for Planning
A	25.09.17	WBF	Updated following tenure change

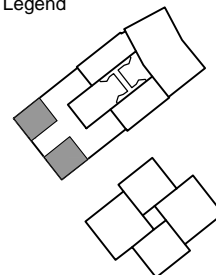
AYLESBURY REGENERATION
Notting Hill Housing Group | London Borough of Southwark



Notes:
Do not scale from drawings unless by agreement with HTA. Use figured dimensions only. Check all dimensions on site prior to commencing the works. Drawing to be read in conjunction with other relevant consultant information.

This drawing is the copyright of HTA Design LLP and must not be copied or reproduced in part, or in whole, without the express permission of HTA Design LLP.
Drawing to be read in conjunction with outline specification.

Legend



2B4P Social Rent Wheelchair Unit

drawing title Block 3 1st - 2nd Floor

Notting Hill Housing Aylesbury Regeneration

client / project

1/50
scale @ A3

A 202
drawing number

A
revision

NHH-P18
project number

SW
originated by

HTA Design LLP
106-110 Kentish Town Road
London, NW1 9PX
020 7485 8555
www.hta.co.uk

HTA Design LLP
21 Slater's Steps
Edinburgh, EH8 8PB
0131 344 4742
www.hta.co.uk



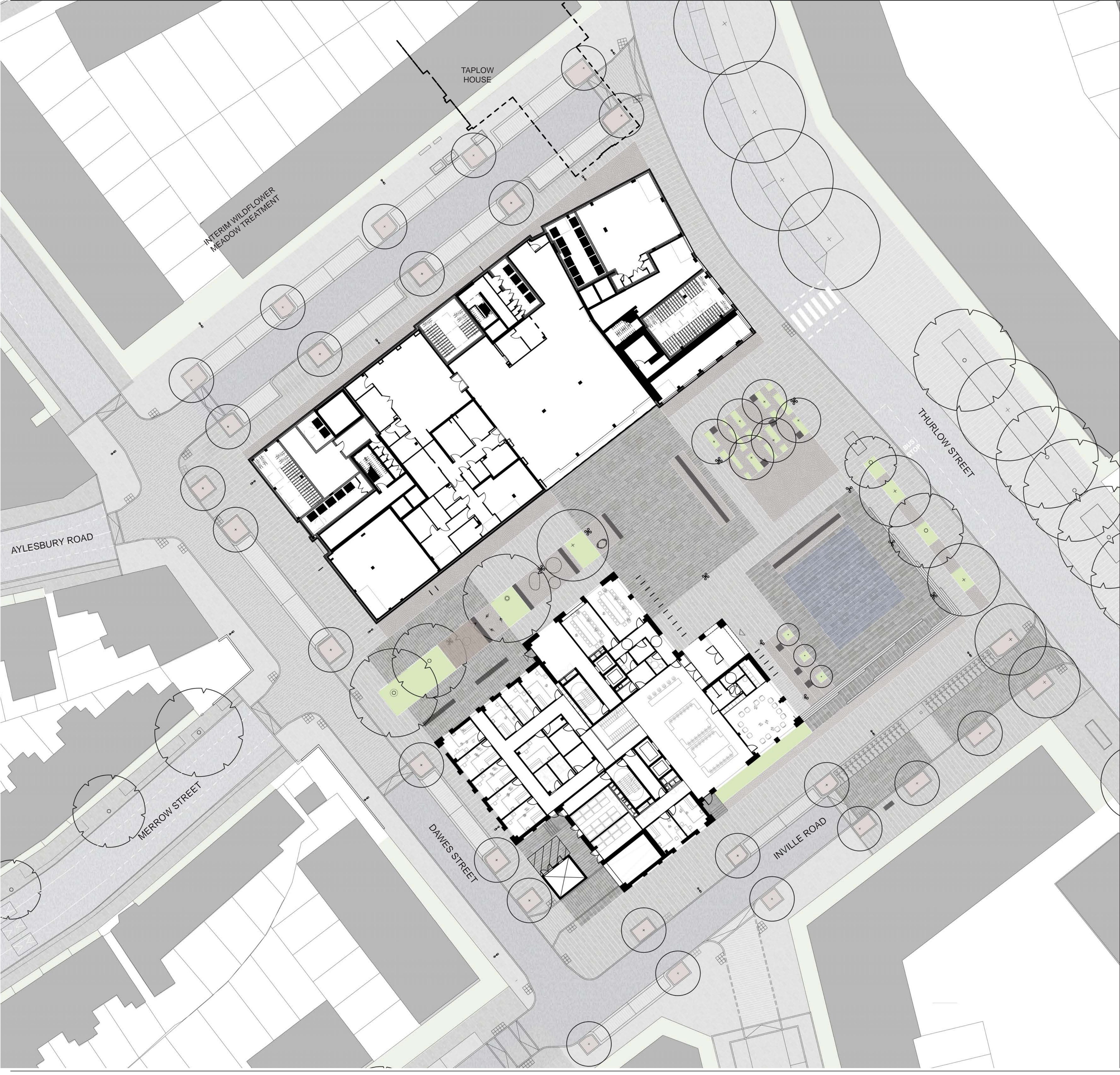
PLANNING
status

South-East Site Elevation (Inville Road)



North-West Site Elevation (New Road)





LEGEND

Existing Buildings

P1-1 Paving within square: Natural stone paving - grey granite or similar

P1-2 Paving within square: Natural stone paving - dark grey granite or similar

P1-3 Paving within square: Pink granite cubes or similar

P2 Paving to traffic carpet roads: Imitation granite sett precast concrete blocks, anti-shift units, mid / silver grey, laid stretcher bond

P3 Parking bays: Imitation granite sett precast concrete blocks, anti-shift units, mid / silver grey, laid stretcher bond

P4 Footpath surface outwith square: Bitmac/ In-situ concrete to match existing

P5 Carriageway surface outwith square: Bituminous surface mixture to LBS / Engineer's specification

E2-1 Kerbs: 100mm upstand 150x300mm grey granite fine picked to all sides

E2-2 Kerbs to areas of traffic carpet: 60mm upstand 150x300mm grey granite, fine picked to all sides

PL1/PL2/PL4 New tree planting

PL6: Self-binding gravel over tree pits

Existing Tree

PL3 Shrub planting

U1 Seating elements, natural stone - grey granite or similar

W1 Dynamic fountains - incorporating jets, mist and mirror pool

'Santander Cycles' Cycle Hire

E1 Step Units: Natural stone to match adjacent paved surface - grey granite or similar. Natural stone hazard warning at top and bottom of steps with contrasting colour visibility strips inset into steps

U4 Bus stop - delivered at future date in line with TFL guidelines / specification

Visitor Cycle Stands

Virgin Media service boxes

Site Boundary / Extent of Works

D 17.09.25 JRW North Block Amended

C 17.11.16 EEO Cycle stands added

B 16.11.16 EEO Cycle stand added

A 11.10.16 EEO Temporary car parking removed

- 28.04.16 EEO Issue for Planning

Rev. Date Drawn Description

Plot-18 Public Open Space Landscape

Illustrative Masterplan

drawing title

L-2900

D

drawing number revision

Notting Hill Housing Aylesbury Regeneration

1:250 & 1:500

client / project scale @ A1 / A3

NHH-P18

EEO

project number originated by

PLANNING

status

HTA Design LLP
106-110 Kentish Town Road
London, NW1 9PX
020 7485 8555
www.hta.co.uk

HTA Design LLP
21 Slater's Shops
Edinburgh, EH8 8PB
0131 344 4742
www.hta.co.uk

Legend

0 5 10 15 20 25 m

NORTH

AYLESBURY REGENERATION

Notting Hill Housing Group | London Borough of Southwark

Notting Hill Housing

hta

DUGGAN MORRIS ARCHITECTS

ARCADIS

AECOM

WSP