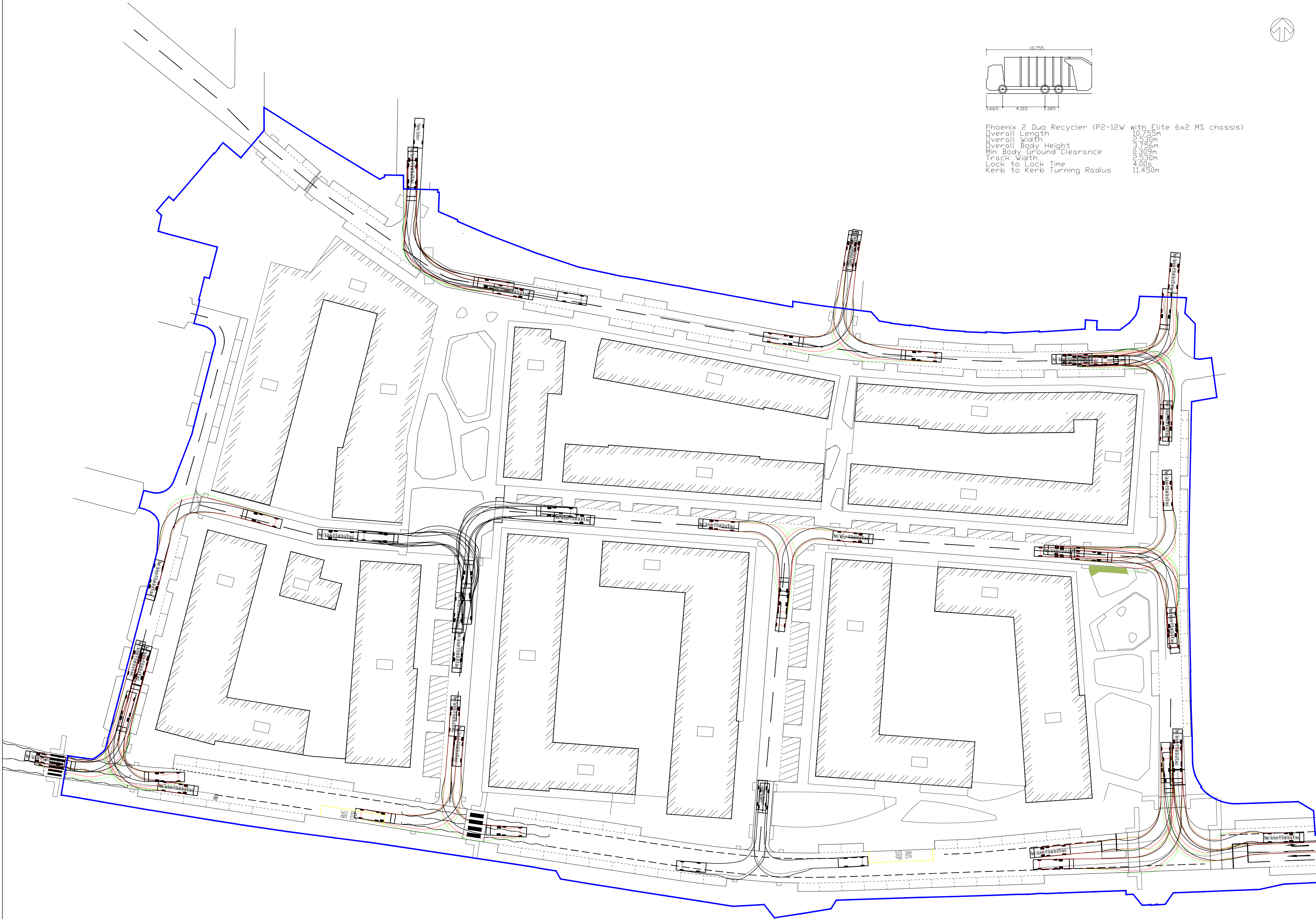


Phoenix 2 Dug Recycler (P2-12W with Elite 6x2 MS chassis)
Overall Length 10.755m
Overall Width 2.930m
Overall Body Height 3.756m
Min Body Ground Clearance 0.309m
Track Width 2.530m
Lock to Lock Time 4.00s
Kerb to Kerb Turning Radius 11.450m



B	28-08-2014	HP	REVISED TO SUIT COMMENTS RECEIVED FROM HTA	CS	CS
A	18-08-2014	HP	DATED 26-08-14, ISSUED FOR PLANNING	CS	CS
REV	DATE	BY	DESCRIPTION	CHK	APD

DRAWING STATUS: PLANNING APPLICATION

Unit 9, The Chase, John Tate Road
Foxholes Business Park, Hertford SG13 7NN
Tel: +44 (0)1992 526000 Fax: +44 (0)1992 526001
<http://www.wspgroup.com>

CLIENT: NHH

ARCHITECT: HTA

PROJECT: AYLESBURY ESTATE
SOUTHWARK

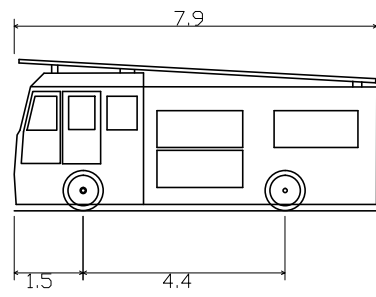
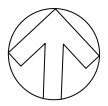
TITLE: FIRST DEVELOPMENT SITE
VEHICULAR SWEEPED PATH - SHEET 1 OF 2

SCALE @ A1: 1:500	CHECKED: CS	APPROVED: CS
CAD FILE: 0304-ATR-003	DESIGN-DRAWN: HP	DATE: August 14
PROJECT No: 50600304	DRAWING No: 0304-ATR-003	REV: B

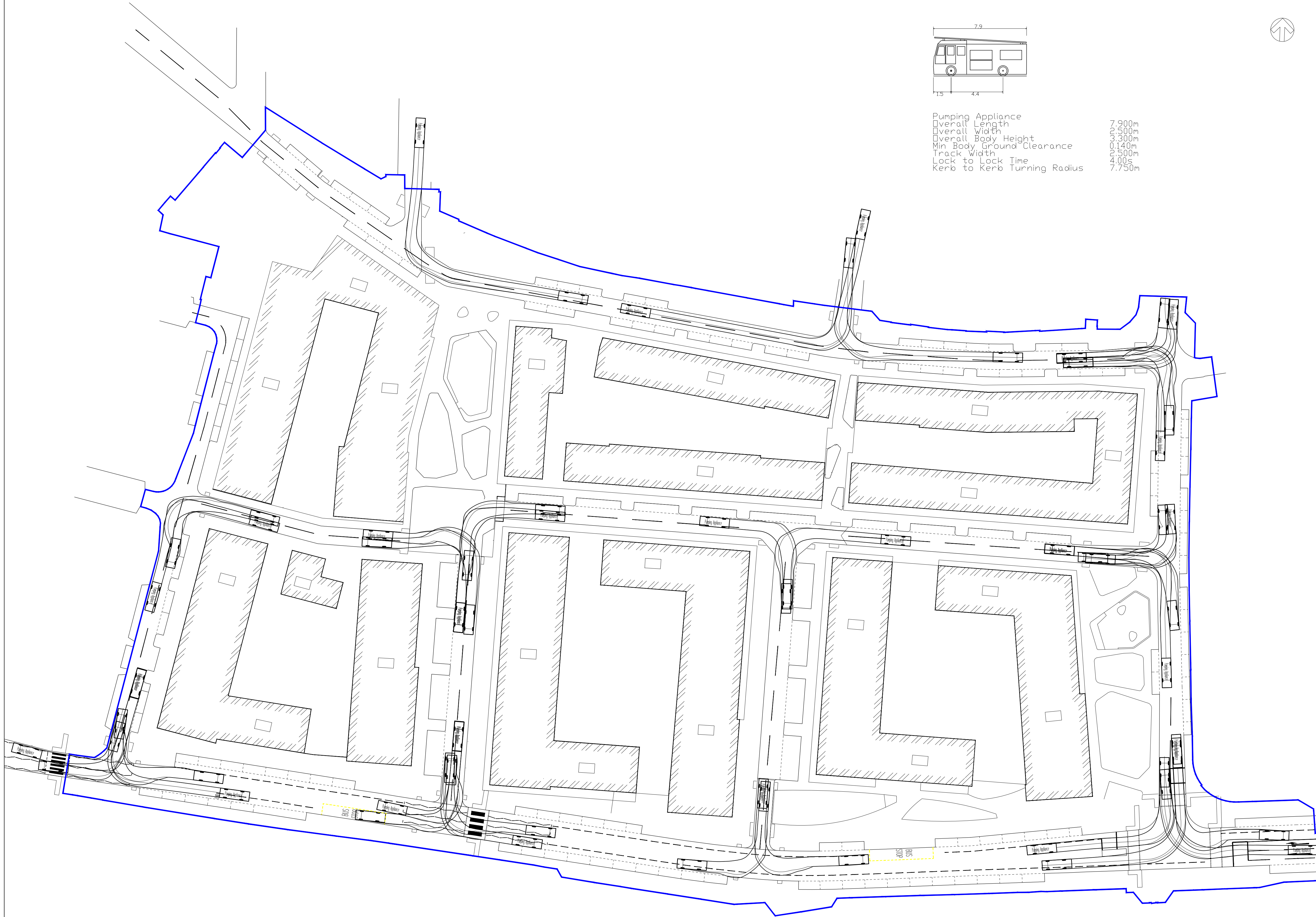
PROJECT DOCUMENT REF: NHH-AES-WSP-C-D01-X-XX-M2_ATR_003

© WSP Group Ltd

DO NOT SCALE



Pumping Appliance
Overall Length 7.900m
Overall Width 2.500m
Overall Body Height 3.300m
Min Body Ground Clearance 0.140m
Track Width 2.500m
Lock to Lock Time 4.00s
Kerb to Kerb Turning Radius 7.750m



A	29-06-2014	HP	FIRST ISSUE - ISSUED FOR PLANNING	CS	CS
REV	DATE	BY	DESCRIPTION	CHK	APP

DRAWING STATUS: PLANNING APPLICATION

Unit 9, The Chase, John Tate Road
Foxholes Business Park, Hertford SG13 7NN
Tel: +44 (0)1992 526000 Fax: +44 (0)1992 526001
<http://www.wspgroup.com>

CLIENT: NHH

ARCHITECT: HTA

PROJECT: AYLESBURY ESTATE
SOUTHWARK

TITLE: FIRST DEVELOPMENT SITE
VEHICULAR SWEEP PATH - SHEET 2 OF 2

SCALE @ A1: 1:500	CHECKED: CS	APPROVED: CS
CAD FILE: 0304-ATR-003-004	DESIGN-DRAWN: HP	DATE: August 14
PROJECT No: 50600304	DRAWING No: 0304-ATR-004	REV: A

PROJECT DOCUMENT REF: NHH-AES-WSP-C-D01-X-XX-M2_ATR_004

© WSP Group Ltd

\\ser01ther1uk.wspgroup.com\projects\50600304 - oylesbury estate, southwark\development\autocad\ga general arrangement\0304-ga-007.dwg, 19 February 2015 12:30:20, Brown, Darren



KEY

PROPOSED CARRIAGEWAY/RAISED TABLE BLACK TOP CONSTRUCTION	INDICATIVE ANTISKID SURFACING/BUS CAGE	VEHICULAR VISIBILITY SPLAY 2.4m x 25m/33m
PROPOSED SHARED SURFACE/RAISED TABLE BLOCK PAVING CONSTRUCTION	SOFT LANDSCAPE AREA	CYCLE VISIBILITY SPLAY 2.4m x 25m
PROPOSED CAR-PARKING BLOCK PAVING CONSTRUCTION	GRAVEL DRESSED MACADAM FIBREDEC OR SIMILAR	PEDESTRIAN VISIBILITY SPLAY BACK OF TACTILE x 25m
PROPOSED CAR-PARKING BLOCK PAVING CONSTRUCTION OVER SILVA CELL GEOCELLULAR SOIL VAULT CONSTRUCTION	GRANITE SURFACE TREATMENT TO TIE INTO LBS WORKS TO WESTMORELAND ROAD	
PROPOSED FOOTPATH FLAG PAVING CONSTRUCTION TO ARCHITECT'S SPECIFICATIONS	TRAFFIC CALMING RAMP TO RAISED TABLE	
PROPOSED PUBLIC REALM PAVING CONSTRUCTION TO ARCHITECT'S SPECIFICATIONS	TACTILE PAVING TO PEDESTRIAN CROSSING	
	PROPOSED KERB 125MM UPSTAND	
	INDICATIVE SURFACE WATER DRAINAGE	
	DEVELOPMENT WORKS BOUNDARY	
	INDICATIVE PROPOSED LEVEL	
	INDICATIVE DEVELOPMENT GROUND FLOOR LEVEL	

DO NOT SCALE

NOTES
1. DRAWING BASED ON TOPOGRAPHICAL SURVEY SUPPLIED BY THE CLIENT AND PRODUCED BY TERRAIN LAND AND ARCHITECTURAL SURVEYORS DATED APRIL 2014.
2. ALL HIGHWAY WORKS TO BE IN ACCORDANCE WITH THE SOUTHWARK STREETScape DESIGN MANUAL.

D	19/02/15	DSB	AMENDED TO SUIT HTA REVISED LAYOUT RECEIVED 15/02/15	CS	CS
C	01-09-2014	HP	INFORMAL PEDESTRIAN CROSSINGS EXTENT AMENDED TO SUIT COMMENTS RECEIVED FROM HTA DATED 29-08-14.	CS	CS
B	28-08-2014	HP	ADDITIONAL LEVELS ADDED, REVISED TO SUIT COMMENTS RECEIVED FROM HTA DATED 26-08-14. ISSUED FOR PLANNING	CS	CS
A	18/08/14	HP	FIRST ISSUE	CS	CS
REV	DATE	BY	DESCRIPTION	CHK	APD

DRAWING STATUS: PLANNING APPLICATION



Unit 9, The Chase, John Tate Road
Foxholes Business Park, Hertford SG13 7NN
Tel: +44 (0)1992 526000 Fax: +44 (0)1992 526001
<http://www.wspgroup.com>

CLIENT: NHH

ARCHITECT: HTA

PROJECT: AYLESBURY ESTATE SOUTHWARK

TITLE: FIRST DEVELOPMENT SITE HIGHWAY INFRASTRUCTURE

SCALE @ A1: 1:500	CHECKED: CS	APPROVED: CS
CAD FILE: 0304-GA-007 TO 010	DESIGN-DRAWN: HP	DATE: August 14
PROJECT No: 50600304	DRAWING No: 0304-GA-007	REV: D

PROJECT DOCUMENT REF: NHH-AES-WSP-C-D01-X-XX-M2_GA007


© WSP Group Ltd

n:\50600304 - aylesbury estate, southwark\development\autocad\p road and paving levels, sections\0304-rp-001 & 002.dwg, 24 September 2014 14:16:43, Panjwani, Hussein

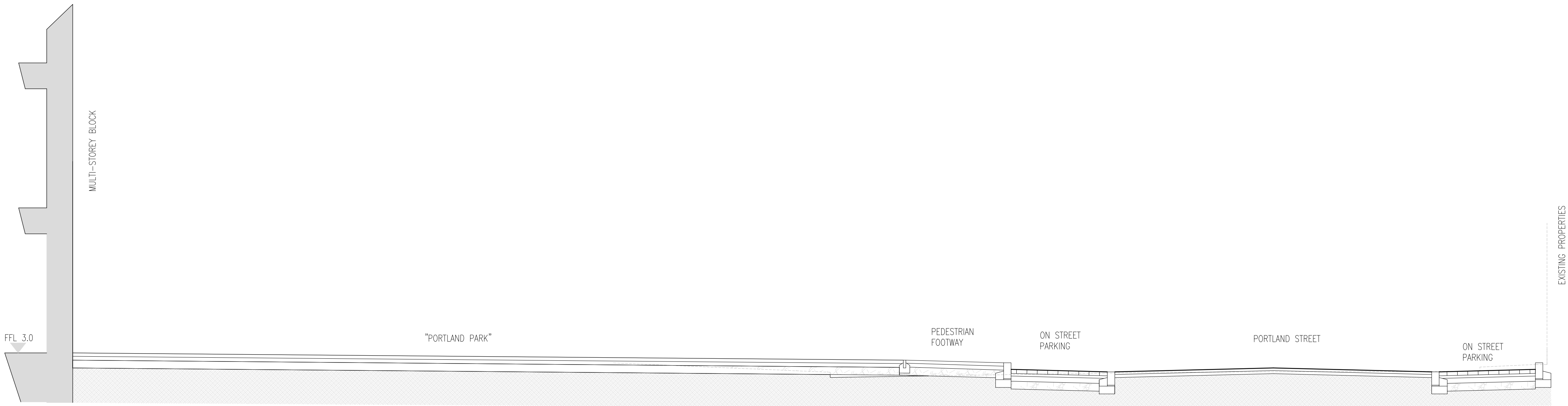
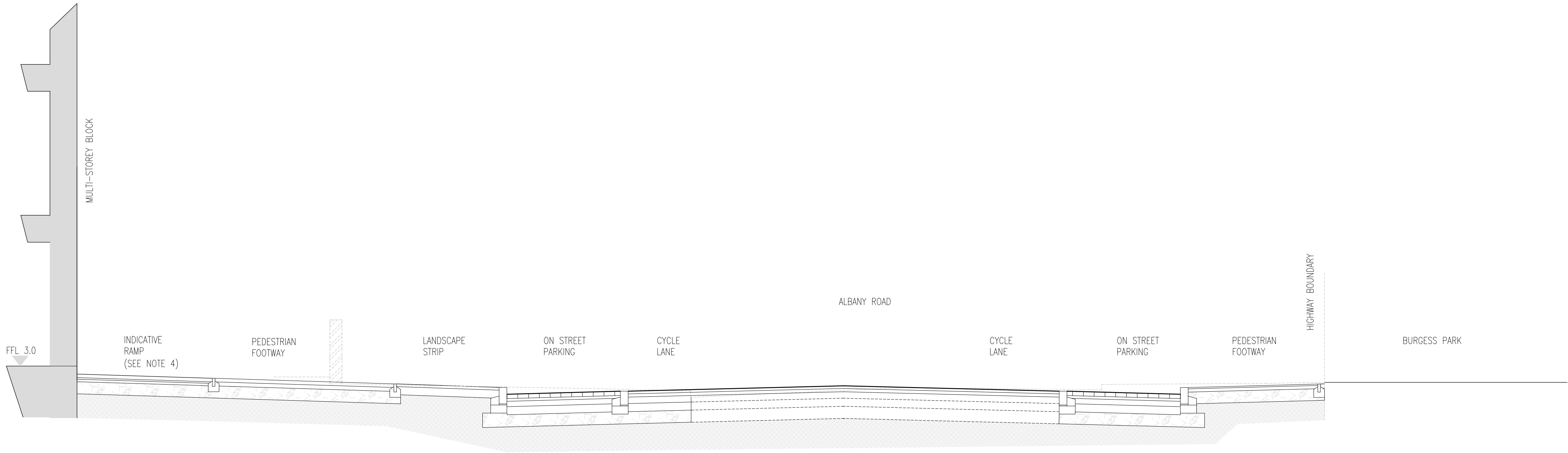


DO NOT SCALE

- NOTES
- FOR PLAN REFER TO DRAWING NUMBER 0304-GA-007.
 - ALL HIGHWAY WORKS TO BE IN ACCORDANCE WITH THE SOUTHWARK STREETScape DESIGN MANUAL.
 - CARRIAGEWAY AND FOOTWAY CROSSFALLS AND CAMBERS TO COMPLY WITH S.S.D.M.
 - RAMPS ARE TO BE PROVIDED AS REQUIRED AT ACCESSES, TO COMPLY WITH D.D.A. AND PART M. BUILDING REGULATIONS.

C	24-09-2014	HP	SCALE AMENDED	CS	CS
B	28-08-2014	MM	ISSUE FOR PLANNING	CS	CS
A	18-08-2014	HP	FIRST ISSUE	CS	CS
REV	DATE	BY	DESCRIPTION	CHK	APD
DRAWING STATUS: PLANNING APPLICATION					
<div> Unit 9, The Chase, John Tate Road Foxholes Business Park, Hertford SG13 7NN Tel: +44 (0)1992 526000 Fax: +44 (0)1992 526001 http://www.wspgroup.com</div>					
CLIENT: NHH					
ARCHITECT: HTA					
PROJECT: AYLESBURY ESTATE SOUTHWARK					
TITLE: FIRST DEVELOPMENT SITE TYPICAL ROAD PROFILES (SHEET 1 OF 2)					
SCALE @ A1:	1:50	CHECKED:	CS	APPROVED:	CS
CAD FILE:	0304-RP-001 & 002	DESIGN-DRAWN:	HP	DATE:	August 14
PROJECT No:	50600304	DRAWING No:	0304-RP-001	REV:	C
PROJECT DOCUMENT REF: NHH-AES-WSP-C-D01-X-XX-M2_RP001					
© WSP Group Ltd					

n:\50600304 - oylesbury estate, southwark\development\autocad\p road and paving levels, sections\0304-rp-001 & 002.dwg, 24 September 2014 14:18:47, Panjwani, Hussein



DO NOT SCALE

- NOTES
- FOR PLAN REFER TO DRAWING NUMBER 0304-GA-007.
 - ALL HIGHWAY WORKS TO BE IN ACCORDANCE WITH THE SOUTHWARK STREETScape DESIGN MANUAL.
 - CARRIAGEWAY AND FOOTWAY CROSSFALLS AND CAMBERS TO COMPLY WITH S.S.D.M.
 - RAMPS ARE TO BE PROVIDED AS REQUIRED AT ACCESSES, TO COMPLY WITH D.D.A. AND PART M. BUILDING REGULATIONS.

REV	DATE	BY	DESCRIPTION	CHK	APD
C	24-09-2014	HP	SCALE AMENDED	CS	CS
B	28-08-2014	MM	ISSUE FOR PLANNING	CS	CS
A	18-08-2014	HP	FIRST ISSUE	CS	CS

DRAWING STATUS: PLANNING APPLICATION					
--------------------------------------	--	--	--	--	--



Unit 9, The Chase, John Tate Road
Foxholes Business Park, Hertford SG13 7NN
Tel: +44 (0)1992 526000 Fax: +44 (0)1992 526001
<http://www.wspgroup.com>

CLIENT:	NHH
---------	-----

ARCHITECT:	HTA
------------	-----

PROJECT:	AYLESBURY ESTATE SOUTHWARK
----------	-------------------------------

TITLE:	FIRST DEVELOPMENT SITE TYPICAL ROAD PROFILES (SHEET 2 OF 2)
--------	--

SCALE @ A1:	1:50	CHECKED:	CS	APPROVED:	CS
CAO FILE:	0304-RP-001 & 002	DESIGN-DRAWN:	HP	DATE:	August 14

PROJECT No:	50600304	DRAWING No:	0304-RP-002	REV:	C
-------------	----------	-------------	-------------	------	---

PROJECT DOCUMENT REF:	NHH-AES-WSP-C-D01-X-XX-M2_RP002
-----------------------	---------------------------------

© WSP Group Ltd
