


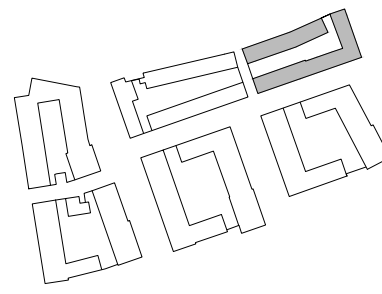
AYLESBURY REGENERATION
Notting Hill Housing Group | London Borough of Southwark

Notes:
Do not scale from drawings unless by agreement with HTA. Use figured dimensions only. Check all dimensions on site prior to commencing the works. Drawing to be read in conjunction with other relevant consultant information.

This drawing is the copyright of HTA Design LLP and must not be copied or reproduced in part, or in whole, without the express permission of HTA Design LLP. Drawing to be read in conjunction with outline specification.

Legend



S03-First & Second Floor Plan **S03 - 102**
drawing title drawing number

Notting Hill Housing Aylesbury Regeneration 1:200
client / project scale @ A1


FOR PLANNING
status

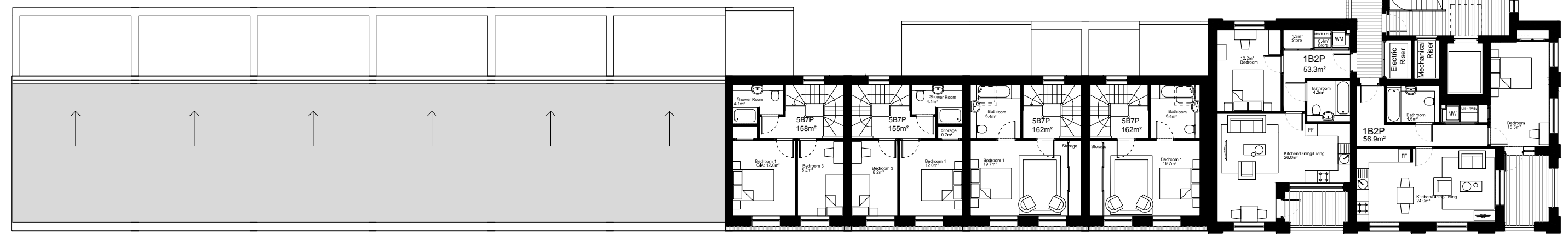
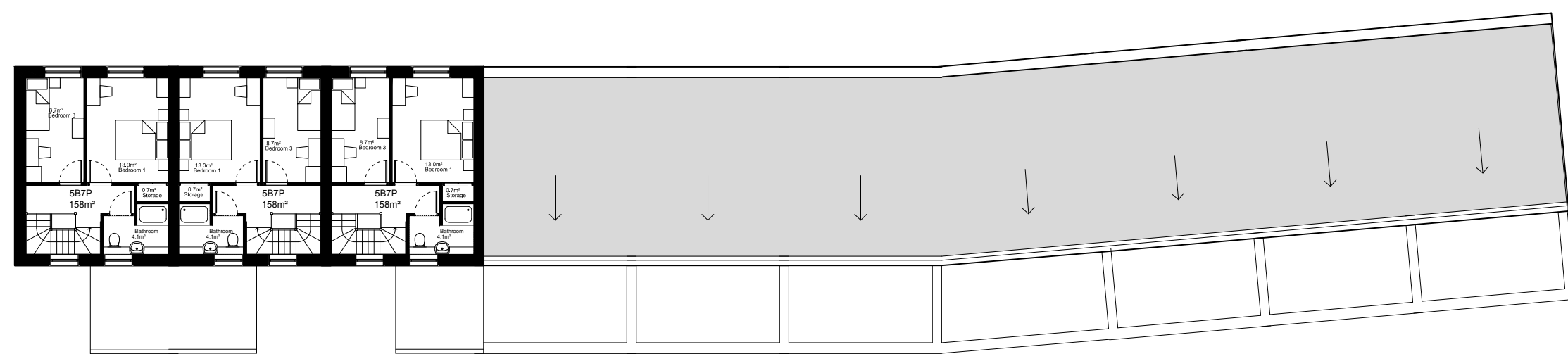
NHH-AES
project number

MDB
originated by

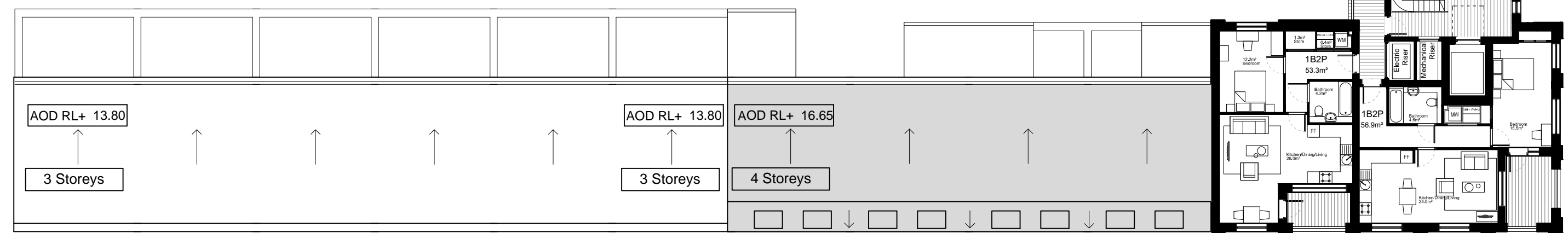
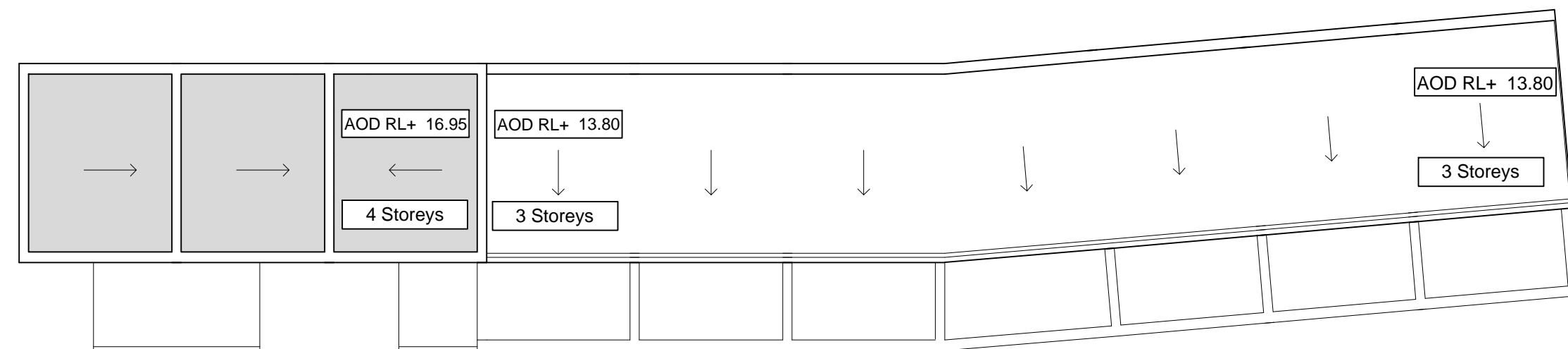
HTA Design LLP
105-110 Kentish Town Road
London, NW1 9PX
020 7485 8555
www.hta.co.uk

HTA Design LLP
21 Slater's Steps
Edinburgh, EH8 8PB
0131 344 4742
www.hta.co.uk





The graph shows a significant increase in the number of people in the 18-24 age group from 2010 to 2012, followed by a slight decrease in 2013. The data points are approximately: 2010: 1.2 million, 2011: 1.4 million, 2012: 1.6 million, 2013: 1.5 million.



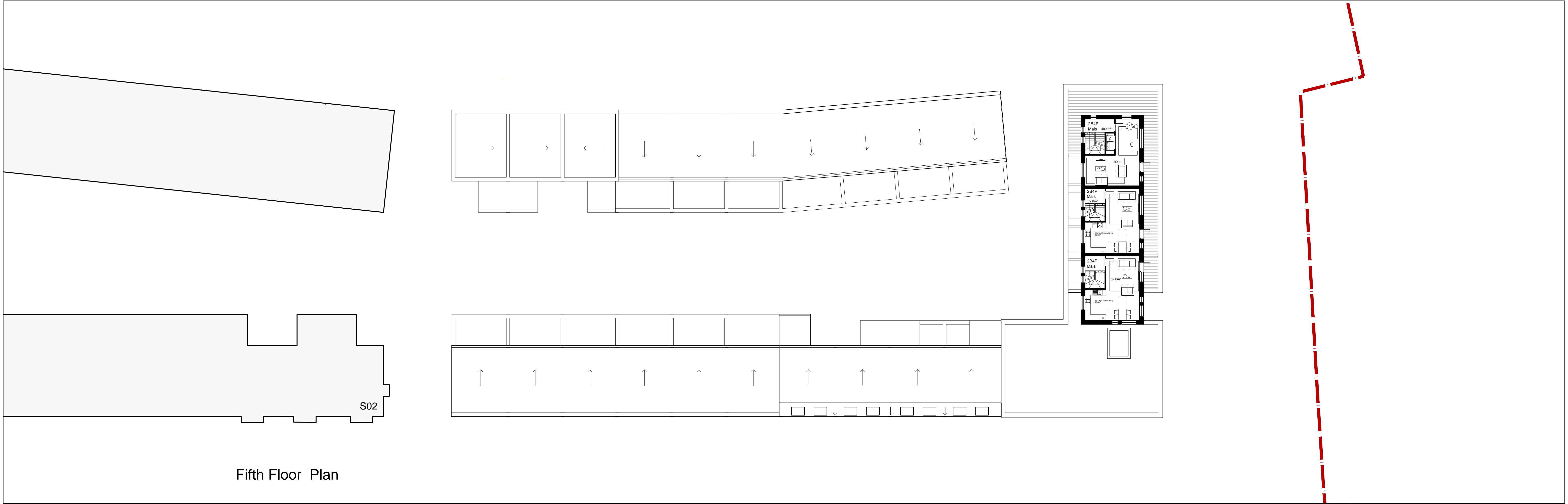
A
revision

NHH-AES	MDB
project number	originated by

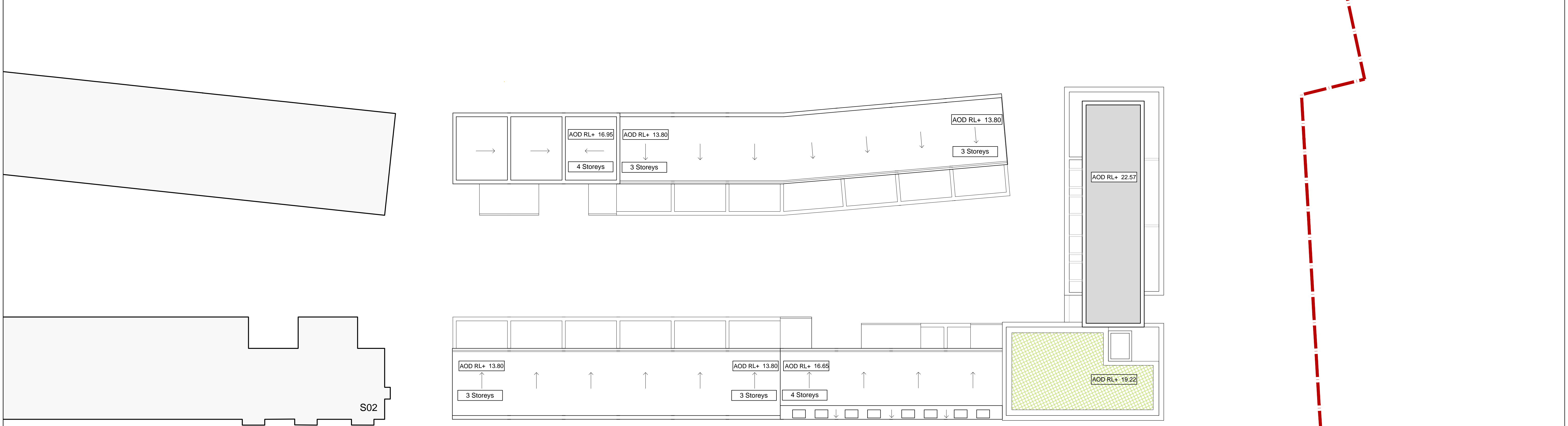
date

HTA Design LLP
21 Slater's Steps
Edinburgh, EH8 8
0131 344 4742
www.hta.co.uk

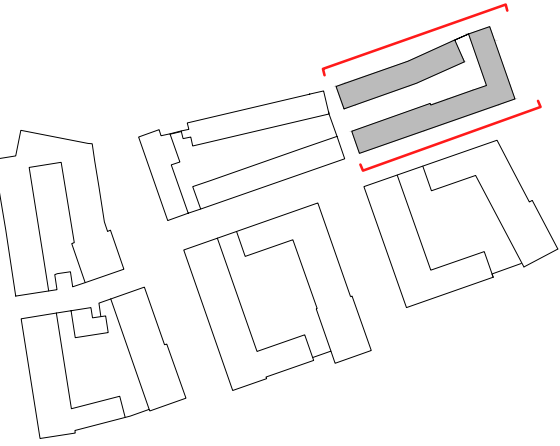




Fifth Floor Plan



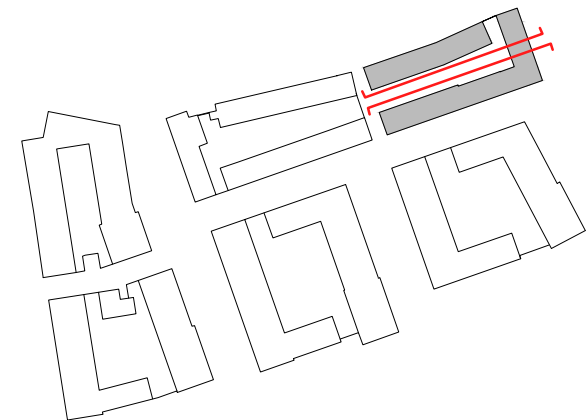
Roof Plan



South Elevation



North Elevation



Rear South Elevation



Rear North Elevation

A 30/01/15 MDB Building S03B height reduced. Increased fenestration for the 4B mews house and top of 5B houses.

Rev Date Drawn Description

AYLESBURY REGENERATION

Notting Hill Housing Group | London Borough of Southwark



BARRATT
LONDON



Hawkins
Brown

mæ

WSP

Deloitte



Notes:
Do not scale from drawings unless by agreement with HTA. Use figured dimensions only. Check all dimensions on site prior to commencing the works. Drawing to be read in conjunction with other relevant consultant information.

This drawing is the copyright of HTA Design LLP and must not be copied or reproduced in part, or in whole, without the express permission of HTA Design LLP. Drawing to be read in conjunction with outline specification.

Legend

S03 - Elevations

drawing title South and North Rear

S03-131

drawing number

A

revision

Notting Hill Housing Aylesbury Regeneration

client / project

1:200

Scale @A1

NHH-AES

project number

MPM

originated by

HTA Design LLP
106-110 Kentish Town Road
London, NW1 9PX
020 7485 8555
www.hta.co.uk

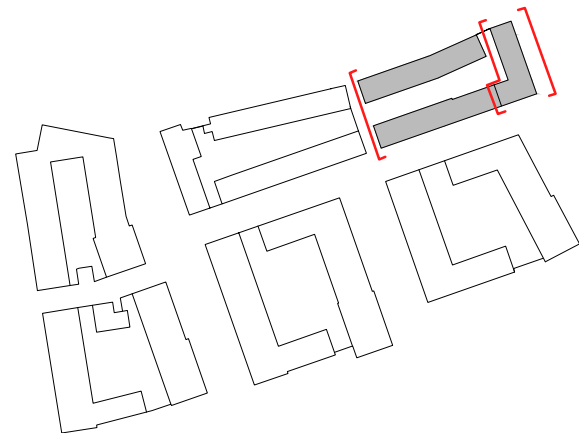
HTA Design LLP
21 Slater's Steps
Edinburgh, EH8 8PB
0131 344 4742
www.hta.co.uk



0 2 4 6 8 10 m

FOR PLANNING

status



East Elevation



Rear West Elevation



West Elevation

A - LBE Building S03B height reduced. Additional fenestration at ground floor for the 4B mews house.

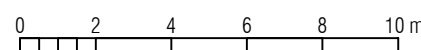
AYLESBURY REGENERATION
Notting Hill Housing Group | London Borough of Southwark



Notes:
Do not scale from drawings unless by agreement with HTA. Use figured dimensions only. Check all dimensions on site prior to commencing the works. Drawing to be read in conjunction with other relevant consultant information.

This drawing is the copyright of HTA Design LLP and must not be copied or reproduced in part, or in whole, without the express permission of HTA Design LLP. Drawing to be read in conjunction with outline specification.

Legend



S03 - Elevations
drawing title West, Rear West, East

S03-132
drawing number

A
revision

Notting Hill Housing Aylesbury Regeneration
client / project

1:200
Scale @ A1

NHH-AES
project number

MPM
originated by

FOR PLANNING
status

HTA Design LLP
105-110 Kentish Town Road
London, NW1 9PX
020 7485 8555
www.hta.co.uk

HTA Design LLP
21 Slater's Steps
Edinburgh, EH8 8PB
0131 344 4742
www.hta.co.uk





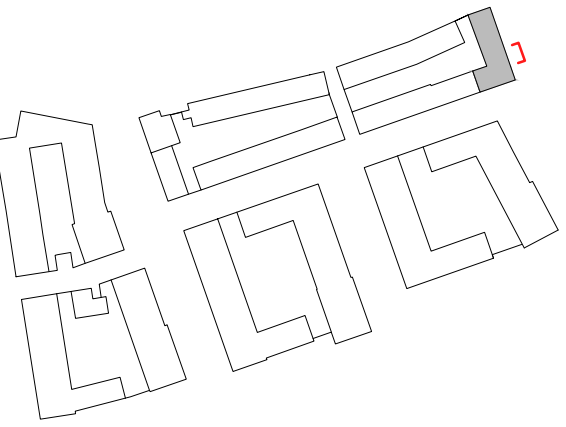
- | | |
|---|--|
| 1. Decorative vertical Type 2 brickwork to form coping. | 6. Frameless glass Juliet balcony. |
| 2. Brickwork - Brick Type 2
Appearance - Waterstruck/ buff colour. | 7. Brickwork - Glazed brick
Appearance - dark Teal (deep blue-green). |
| 3. Aluminium window frame
Appearance - dark grey. | 8. Soldier course Type 2 brickwork. |
| 4. Glazed brick projecting window surround
Appearance - dark Teal (deep blue-green). | 9. Brick soffit. |
| 5. Metal projecting bay window, secret fixed frame, soffit and fascia panels
Appearance - dark grey. | 10. Metal railing on brick plinth. |
| | 11. Aluminium door frame
Appearance - dark grey. |

S03A - 5 bed house



- | | |
|---|---|
| 1. Metal standing seam roof
Appearance - dark grey. | 5. Glazed brick projecting window surround
Appearance - dark Teal (deep blue-green). |
| 2. Decorative vertical Type 2 brickwork to form coping. | 6. Brick soffit. |
| 3. Brickwork - Brick Type 2
Appearance - Waterstruck/ buff colour. | 7. Aluminium door frame
Appearance - dark grey. |
| 4. Aluminium window frame
Appearance - dark grey. | 8. Metal railing on brick plinth. |
| | 9. Soldier course Type 2 brickwok. |

S03A - 4 bed house



- 1. Brickwork - Brick Type 6
Appearance - Clinker brick.
- 2. Aluminium window frame
Appearance - dark grey.
- 3. Reconstituted stone coping.
- 4. Brickwork - Brick Type 2
Appearance - Waterstruck/ buff colour.
- 5. Brickwork - Glazed brick
Appearance - dark Teal (deep blue-green).
- 6. Decorative vertical glazed brick
Appearance - dark Teal (deep blue-green).
- 7. Projecting balcony with aluminium dark grey secret fixed fascia and soffit.
- 8. Dark grey metal Juliet balcony.
- 9. Brick Soffit.
- 10. Metal downpipe.
- 11. Metal railing on brick plinth.