





A 30/01/15 MDB Additional unit and increased fenestration for LD Facility. Fold 5B houses footprints updated. Increased fenestration for the 4B mews house and top of 5B houses.

Rev Date Drawn Description

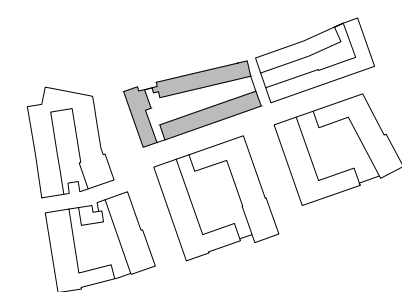
AYLESBURY REGENERATION
Notting Hill Housing Group | London Borough of Southwark



Notes:
Do not scale from drawings unless by agreement with HTA. Use figured dimensions only. Check all dimensions on site prior to commencing the works. Drawing to be read in conjunction with other relevant consultant information.

This drawing is the copyright of HTA Design LLP and must not be copied or reproduced in part or in whole, without the express permission of HTA Design LLP. Drawing to be read in conjunction with outline specification.

Legend



S02-Ground Floor

drawing title

Notting Hill Housing Aylesbury Regeneration
client / project

FOR PLANNING
status

S02-101

drawing number

1:200
Scale @ A1

date

A

revision

MDB
originated by



NHH-AES
project number

HTA Design LLP
105-110 Kentish Town Road
London, NW1 9PX
020 7485 8555
www.hta.co.uk

HTA Design LLP
21 Slater's Steps
Edinburgh, EH8 8PB
0131 344 4742
www.hta.co.uk



First Floor Plan



Second Floor Plan

A 30/01/15 MDB Additional unit for LD Facility. Four 5B houses footprints updated. Additional fenestration for the 4B mews house and top of 5B houses.

Rev Date Drawn Description

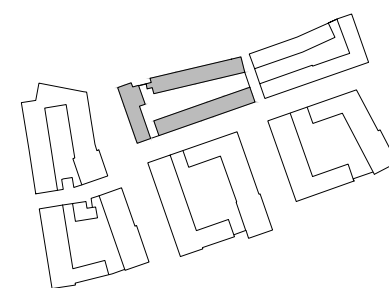
AYLESBURY REGENERATION
Notting Hill Housing Group | London Borough of Southwark



Notes:
Do not scale from drawings unless by agreement with HTA. Use figured dimensions only. Check all dimensions on site prior to commencing the works. Drawing to be read in conjunction with other relevant consultant information.

This drawing is the copyright of HTA Design LLP and must not be copied or reproduced in part or in whole, without the express permission of HTA Design LLP. Drawing to be read in conjunction with outline specification.

Legend



0 2 4 6 8 10 m



S02-First and Second Floor Plan S02 - 102

drawing title drawing number

Notting Hill Housing Aylesbury Regeneration 1:200
client / project scale @ A1

FOR PLANNING

status date

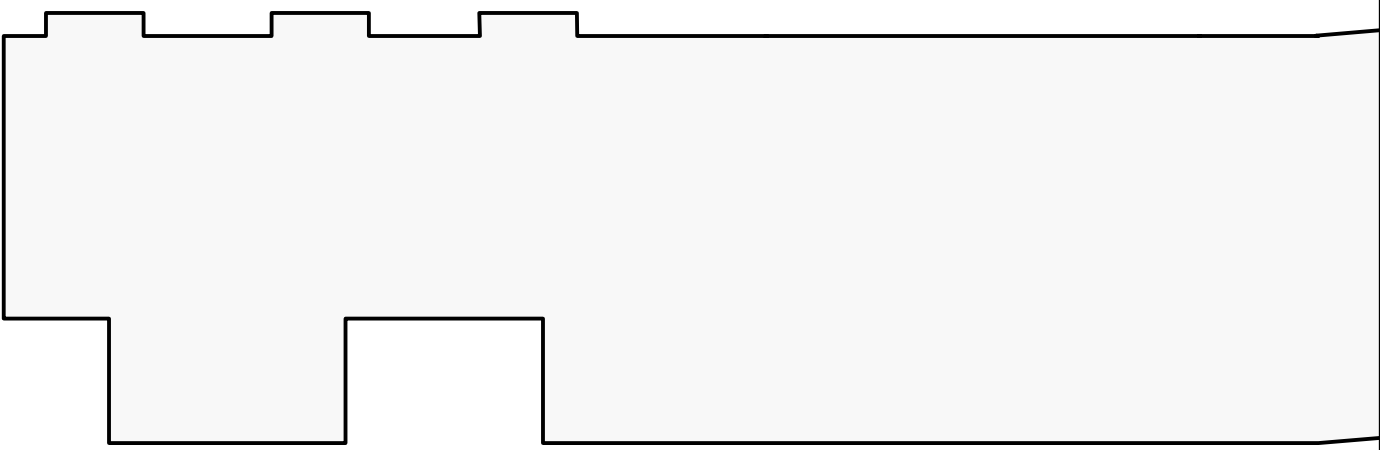
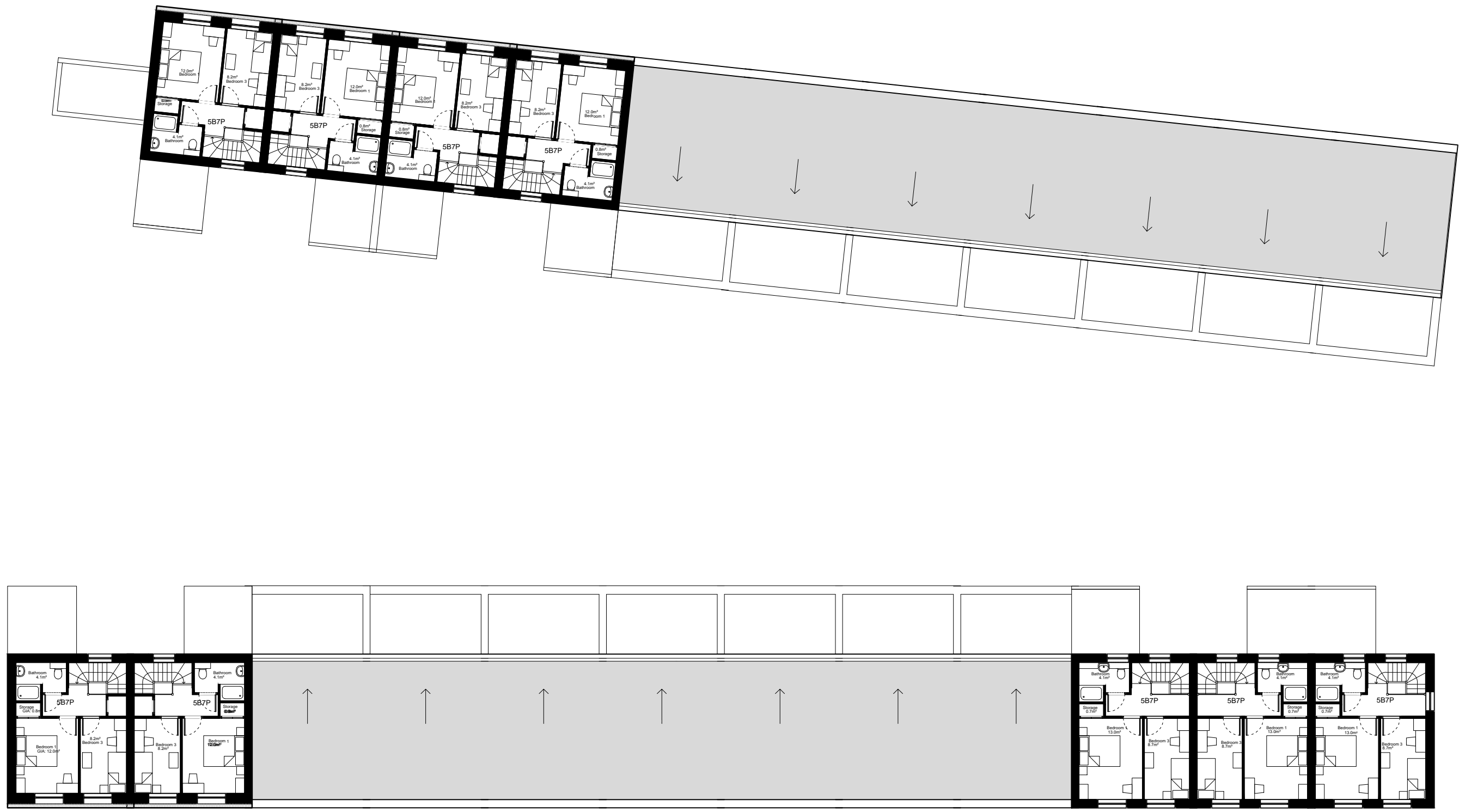
NHH-AES MDB
project number originated by

HTA Design LLP
106-110 Kentish Town Road
London, NW1 9PX
020 7485 8555
www.hta.co.uk

HTA Design LLP
21 Slater's Steps
Edinburgh, EH8 8PB
0131 344 4742
www.hta.co.uk



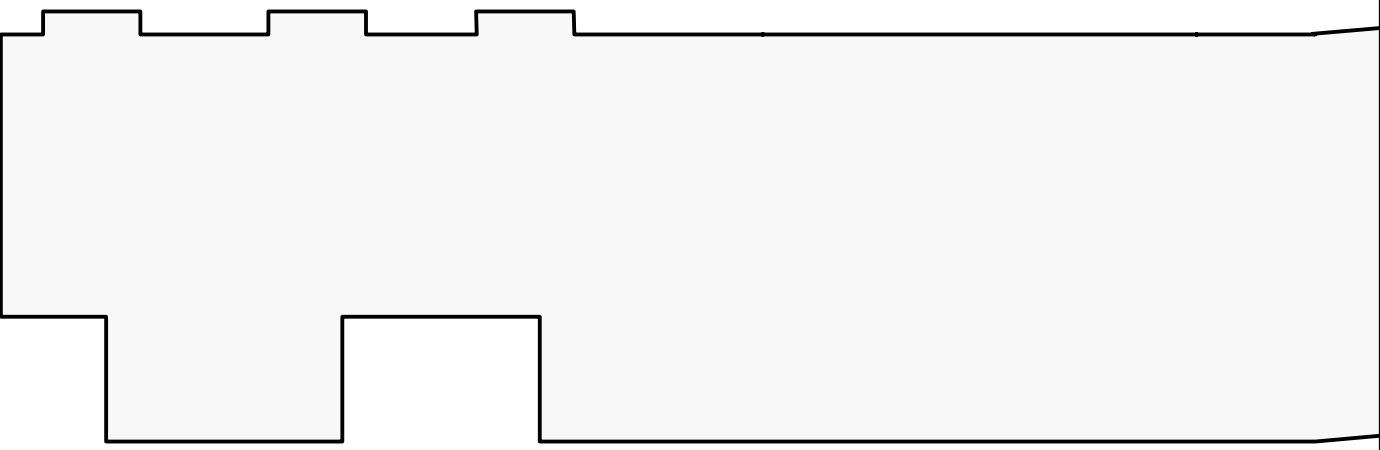
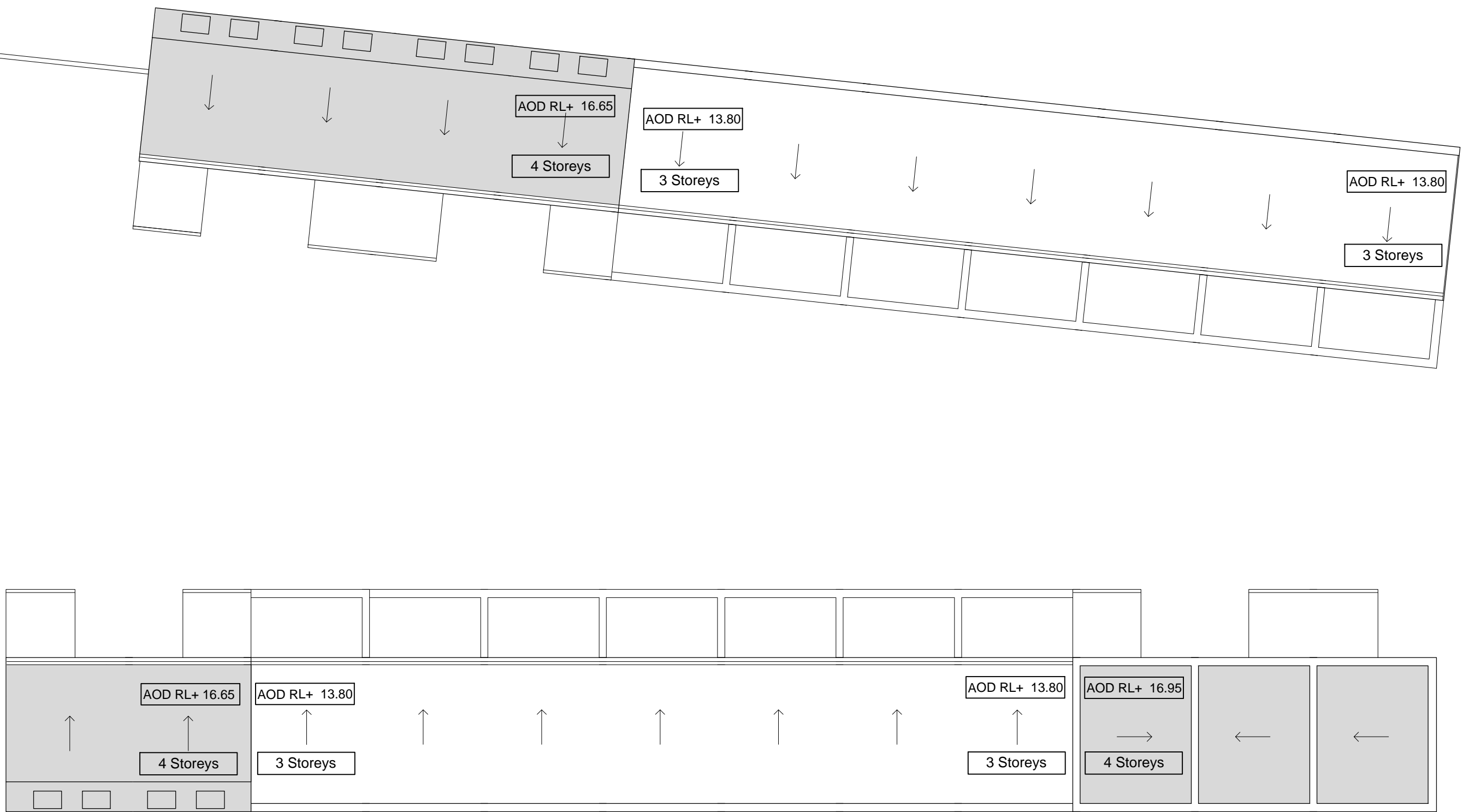
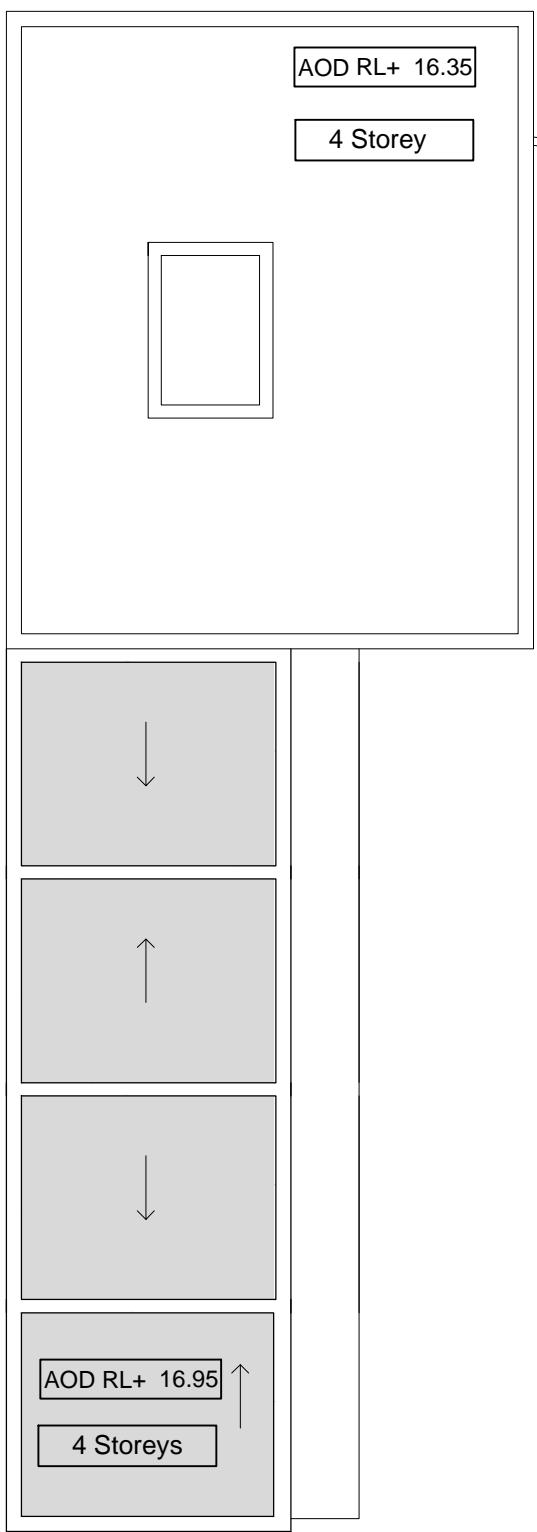
S01



S03

Third Floor Plan

S01



S03

Roof Plan

A 30/01/15 MDB Additional unit for LD Facility. Four 5B houses footprints updated. Additional fenestration for the 4B mews house and top of 5B houses.

Rev Date Drawn Description

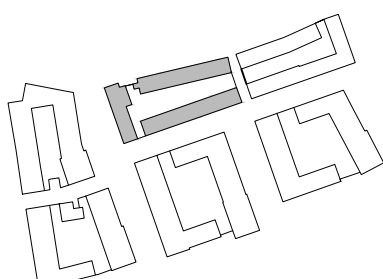
AYLESBURY REGENERATION
Notting Hill Housing Group | London Borough of Southwark



Notes:
Do not scale from drawings unless by agreement with HTA. Use figured dimensions only. Check all dimensions on site prior to commencing the works. Drawing to be read in conjunction with other relevant consultant information.

This drawing is the copyright of HTA Design LLP and must not be copied or reproduced in part, or in whole, without the express permission of HTA Design LLP. Drawing to be read in conjunction with outline specification.

Legend



S02-Third and Roof Floor Plans S02 - 103

drawing title drawing number

Notting Hill Housing Aylesbury Regeneration 1:200
client / project scale @ A1

FOR PLANNING

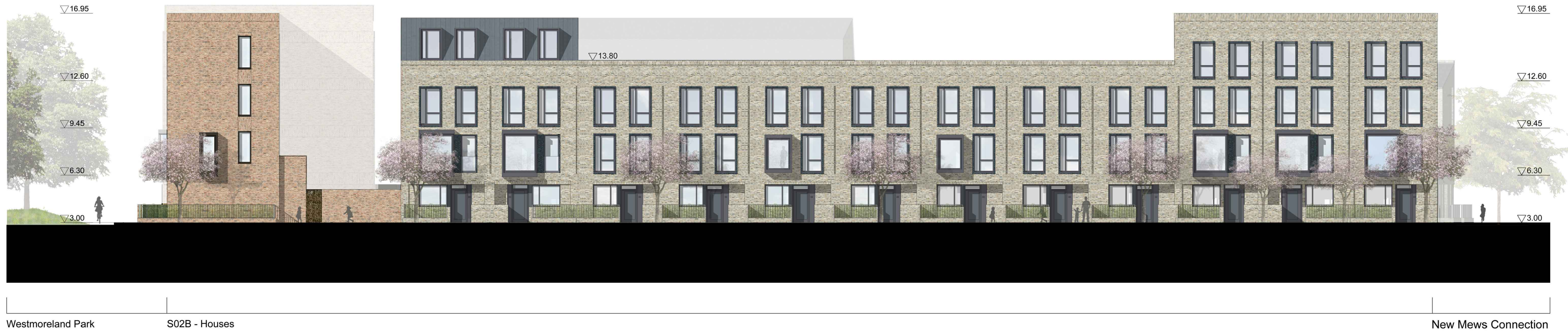
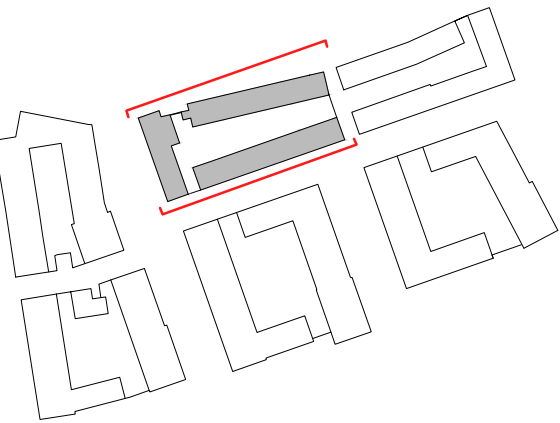
status date

NHH-AES MDB
project number revision

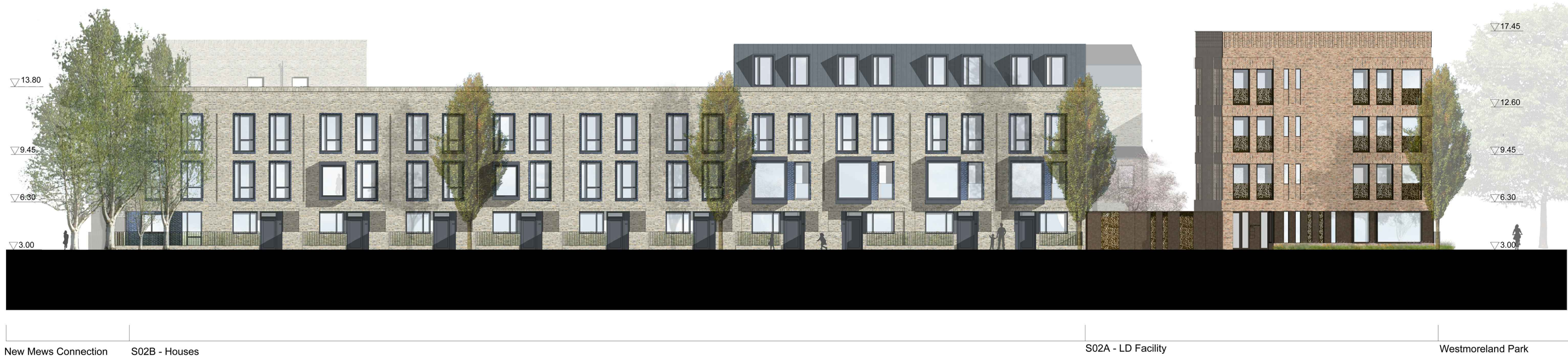
HTA Design LLP
105-110 Kentish Town Road
London, NW1 9PX
020 7485 8555
www.hta.co.uk

HTA Design LLP
21 Slater's Steps
Edinburgh, EH8 8PB
0131 344 4742
www.hta.co.uk





South Elevation



North Elevation

A 30/01/15 MDB LD Facility elevation updated to reflect new ground floor unit. Increased fenestration for the 4B mews house.

Rev	Date	Drawn	Description
-----	------	-------	-------------

AYLESBURY REGENERATION

Notting Hill Housing Group | London Borough of Southwark



BARRATT
LONDON



Hawkins
Brown

mæ



Deloitte



Notes:
Do not scale from drawings unless by agreement with HTA. Use figured dimensions only. Check all dimensions on site prior to commencing the works. Drawing to be read in conjunction with other relevant consultant information.

This drawing is the copyright of HTA Design LLP and must not be copied or reproduced in part, or in whole, without the express permission of HTA Design LLP. Drawing to be read in conjunction with outline specification.

Legend

0 2 4 6 8 10 m

S02 - Elevations

South and North

Notting Hill Housing Aylesbury Regeneration

client / project

S02-130

drawing number

1:200

1:200@A1

NHH-AES

project number

A

revision

MPM

originated by

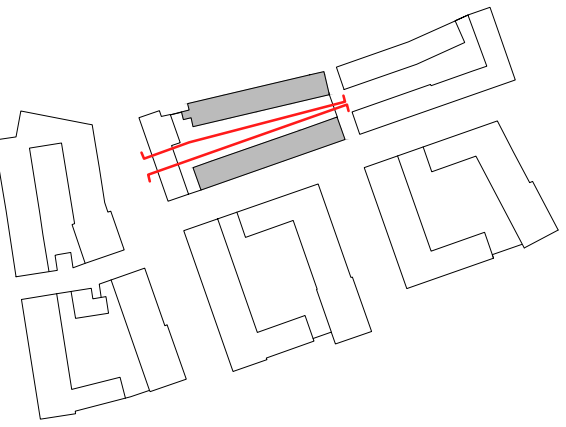
FOR PLANNING

status

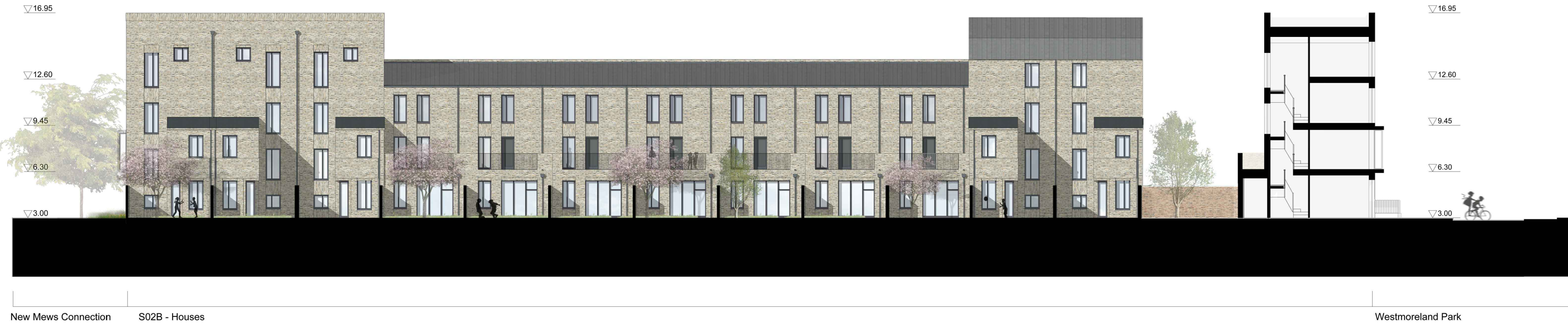
HTA Design LLP
105-110 Kentish Town Road
London, NW1 9PX
020 7485 8555
www.hta.co.uk

HTA Design LLP
21 Slater's Steps
Edinburgh, EH8 8PB
0131 344 4742
www.hta.co.uk





Rear South Elevation



Rear North Elevation

A 30/01/15 MDB LD Facility elevation updated to reflect new ground floor unit. Increased fenestration for the 4B mews house and top of 5B houses.

Rev	Date	Drawn	Description
-----	------	-------	-------------

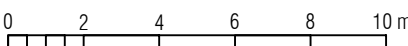
AYLESBURY REGENERATION
Notting Hill Housing Group | London Borough of Southwark



Notes:
Do not scale from drawings unless by agreement with HTA. Use figured dimensions only. Check all dimensions on site prior to commencing the works. Drawing to be read in conjunction with other relevant consultant information.

This drawing is the copyright of HTA Design LLP and must not be copied or reproduced in part or in whole, without the express permission of HTA Design LLP. Drawing to be read in conjunction with outline specification.

Legend



S02 - Elevations
drawing title

Rear South and North

S02-131
drawing number

Notting Hill Housing Aylesbury Regeneration
client / project

1:200
scale @ A1

NHH-AES
project number

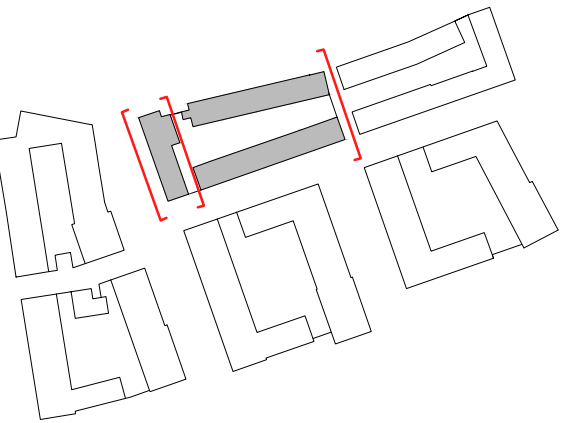
MPM
originated by

FOR PLANNING
status

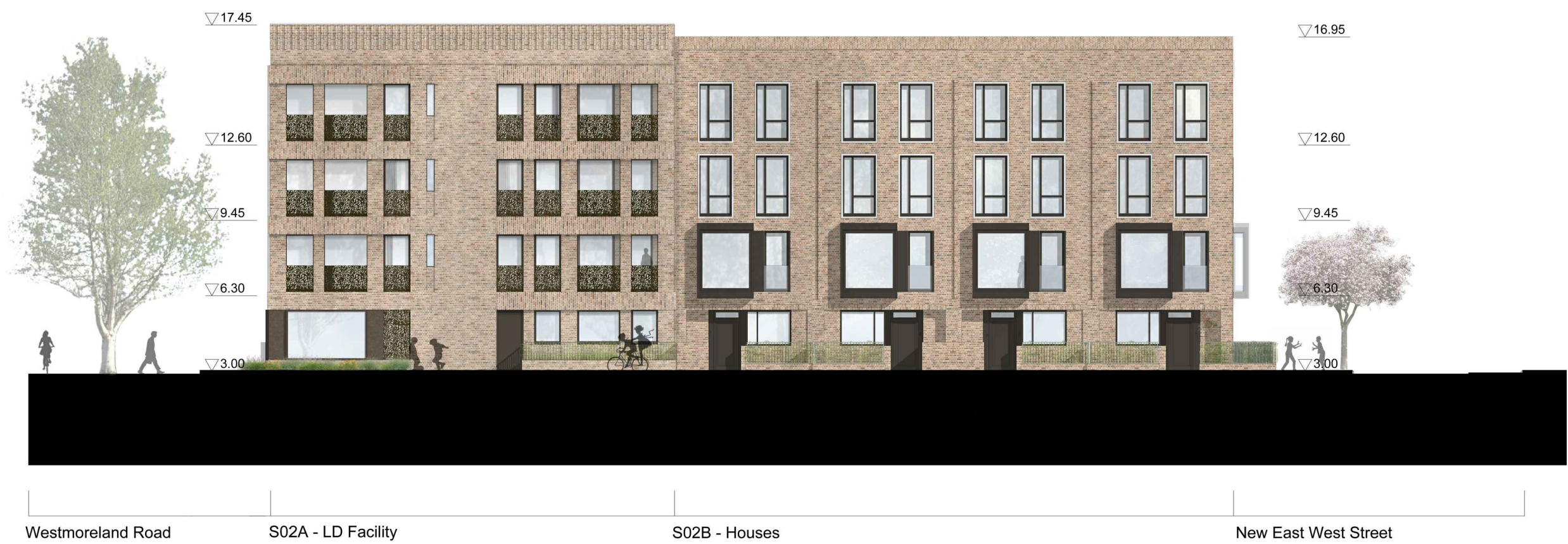
HTA Design LLP
105-110 Kentish Town Road
London, NW1 9PX
020 7485 8555
www.hta.co.uk

HTA Design LLP
21 Slater's Steps
Edinburgh, EH8 8PB
0131 344 4742
www.hta.co.uk





S02A - LD Facility



West Elevation



Rear East Elevation



East Elevation

A 30/01/15 MDB LD Facility elevation updated to reflect new ground floor unit. Increased fenestration for the 4B mews house and top of 5B houses.

Rev	Date	Drawn	Description
-----	------	-------	-------------

AYLESBURY REGENERATION

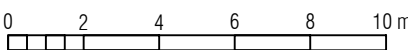
Notting Hill Housing Group | London Borough of Southwark



Notes:
Do not scale from drawings unless by agreement with HTA. Use figured dimensions only. Check all dimensions on site prior to commencing the works. Drawing to be read in conjunction with other relevant consultant information.

This drawing is the copyright of HTA Design LLP and must not be copied or reproduced in part, or in whole, without the express permission of HTA Design LLP. Drawing to be read in conjunction with outline specification.

Legend



S02 - Elevations

drawing title East, Rear East, West

S02-132

drawing number

A

revision

Notting Hill Housing Aylesbury Regeneration

client / project

1:200

scale @ A1

NHH-AES

project number

MPM

originated by

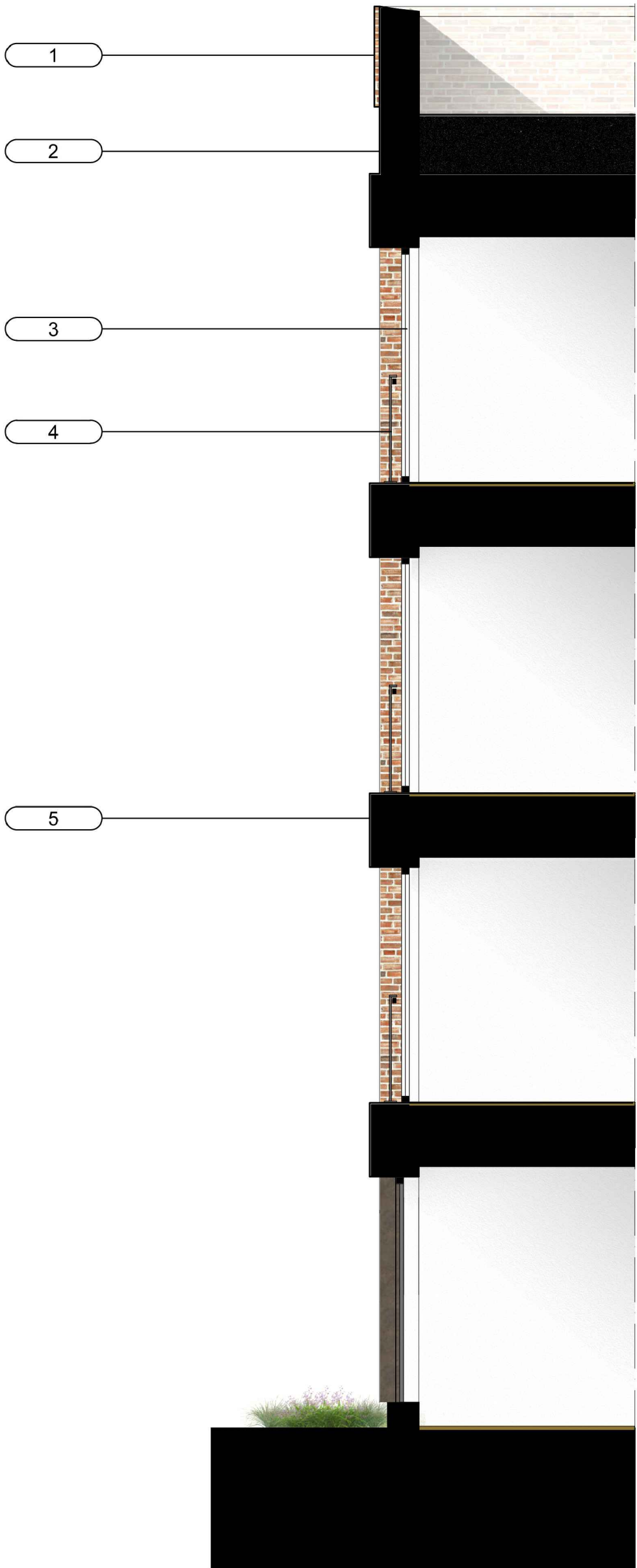
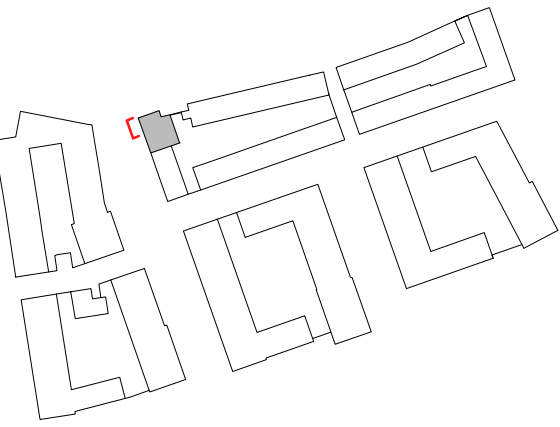
FOR PLANNING

status

HTA Design LLP
106-110 Kentish Town Road
London, NW1 9PX
020 7485 8555
www.hta.co.uk

HTA Design LLP
21 Slater's Steps
Edinburgh, EH8 8PB
0131 344 4742
www.hta.co.uk





1. Decorative brickwork to form cornice.
2. Brickwork - Brick Type 1
Appearance - waterstruck/ red.
3. Aluminium window frame.
Appearance - dark Sienna brown.
4. Metal panel with decorative perforations.
Appearance - dark Sienna brown.
5. Horizontal band of brickwork.
6. Wintergarden.
7. Decorative/perforated ventilation panel to plant space.
Appearance - dark Sienna brown.

S02A - Learning Disabilities Facility

A 30/01/15 MDB LD Facility elevation updated to reflect new ground floor unit.

Rev Date Drawn Description

AYLESBURY REGENERATION
Notting Hill Housing Group | London Borough of Southwark



BARRATT
LONDON



Hawkins
Brown

mæ

WSP

Deloitte



Notes:
Do not scale from drawings unless by agreement with HTA. Use figured dimensions only. Check all dimensions on site prior to commencing the works. Drawing to be read in conjunction with other relevant consultant information.

Legend

This drawing is the copyright of HTA Design LLP and must not be copied or reproduced in part, or in whole, without the express permission of HTA Design LLP. Drawing to be read in conjunction with outline specification.

S02 - Detail Elevation Study
drawing title - S02A - Learning Disabilities Facility

S02-140
drawing number

A
revision

Notting Hill Housing Aylesbury Regeneration
client / project

1:50
Scale @ A1

NHH-AES
project number

MPM
originated by

0 1 2 m

FOR PLANNING

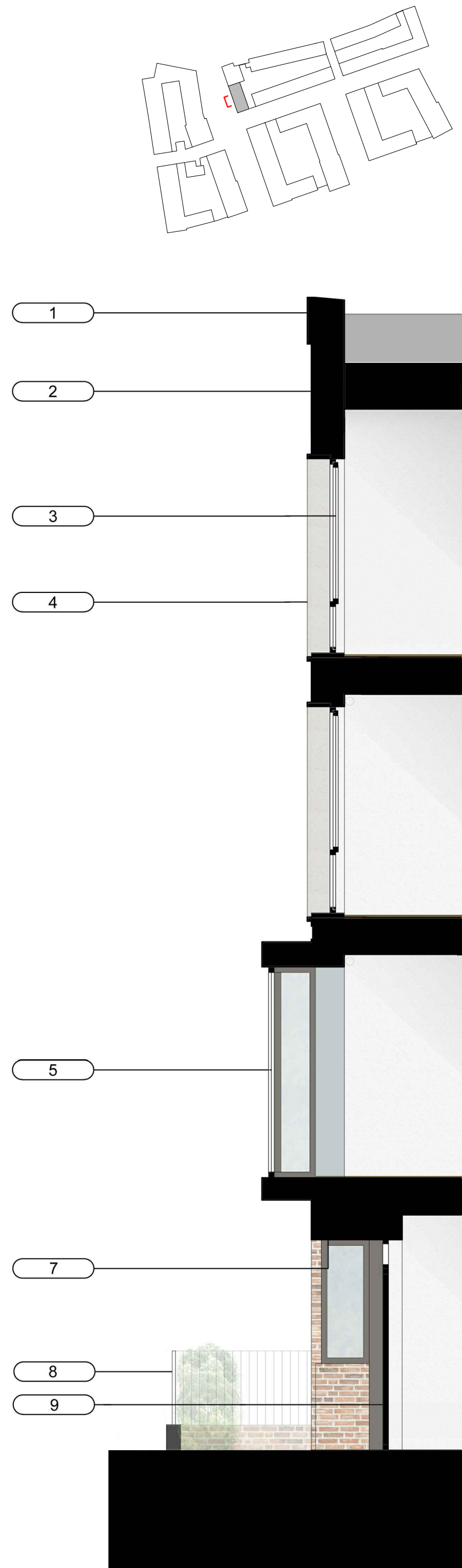
status

date

HTA Design LLP
105-110 Kentish Town Road
London, NW1 9PX
020 7485 8555
www.hta.co.uk

HTA Design LLP
21 Slater's Steps
Edinburgh, EH8 8PB
0131 344 4742
www.hta.co.uk





1. Decorative vertical Type 1 brickwork to form coping.

2. Brickwork - Brick Type 1
Appearance - Waterstruck/Red.

3. Aluminium window frame
Appearance - dark Sienna brown.

4. Reconstituted stone projecting window surround.

5. Metal projecting bay window, secret fixed frame, soffit and fascia panels
Appearance - dark Sienna brown.
6. Frameless glass Juliet balcony.

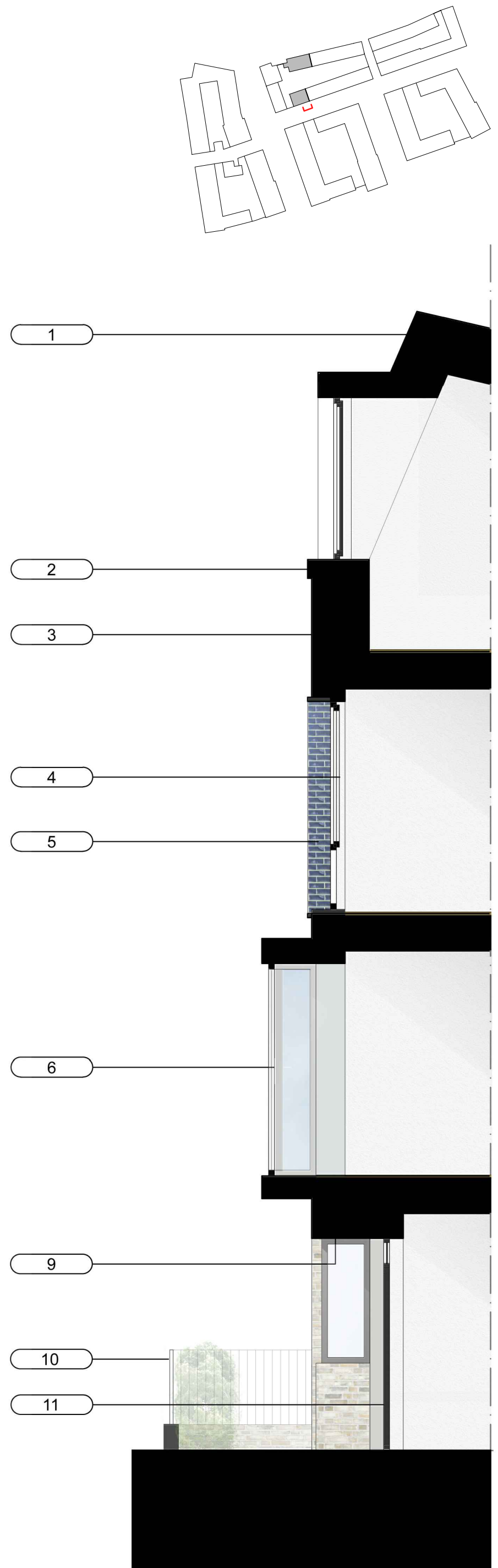
7. Brick soffit.

8. Metal railing on brick plinth.

9. Aluminium door frame
Appearance - dark Sienna brown.

10. Soldier course Type 1 brickwork.

S02B - 5 bed house



1. Metal standing seam roof
Appearance - dark grey.

2. Decorative vertical Type 2 brickwork.

3. Brickwork - Brick Type 2
Appearance - Waterstruck/ buff colour.

4. Aluminium window frame
Appearance - dark grey.

5. Glazed brick projecting window surround
Appearance - dark Teal (deep blue-green).
6. Metal projecting bay window, secret fixed frame, soffit and fascia panels
Appearance - dark grey.

7. Brickwork - Glazed brick
Appearance - dark Teal (deep blue-green).

8. Frameless glass Juliet balcony.

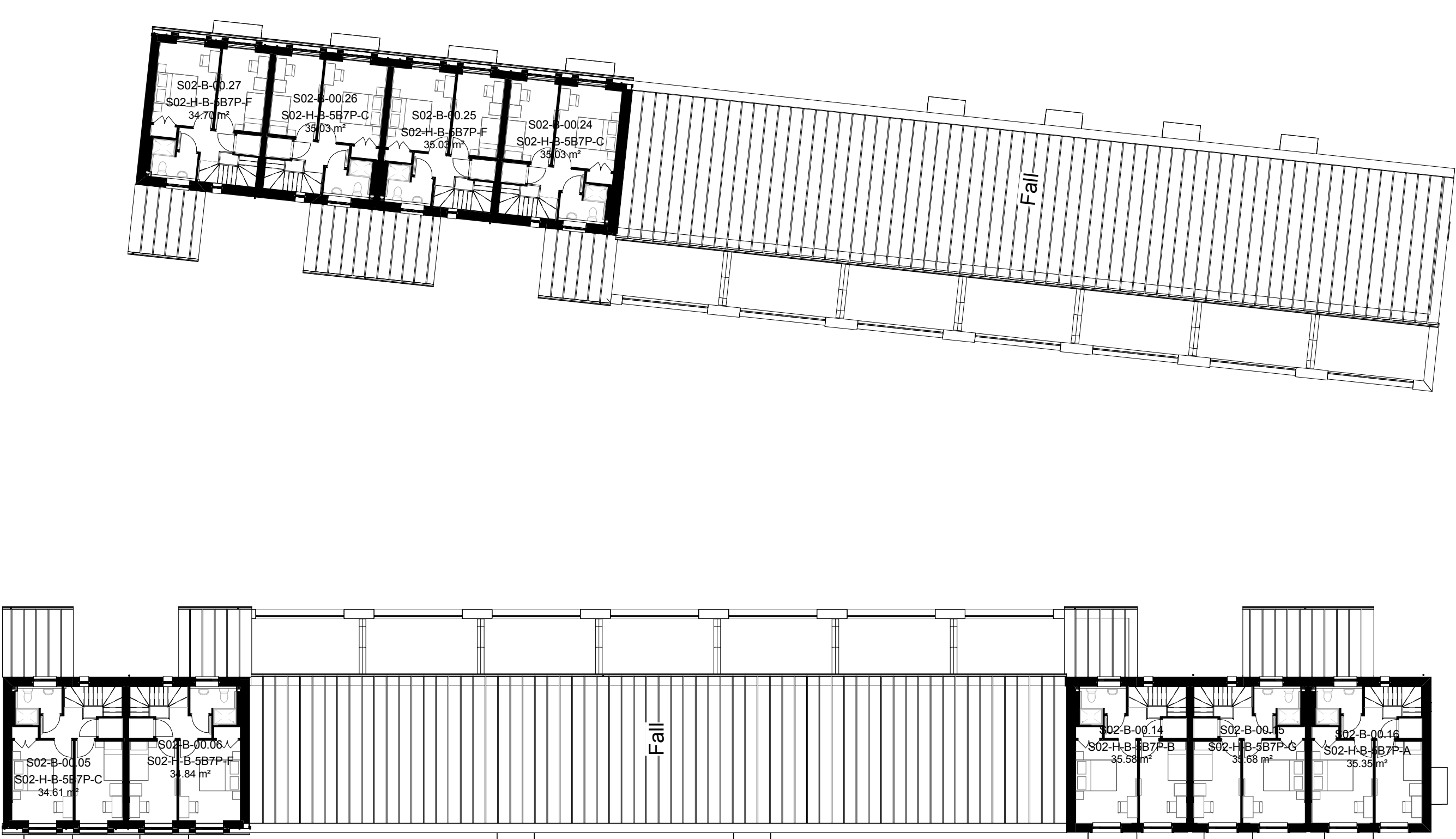
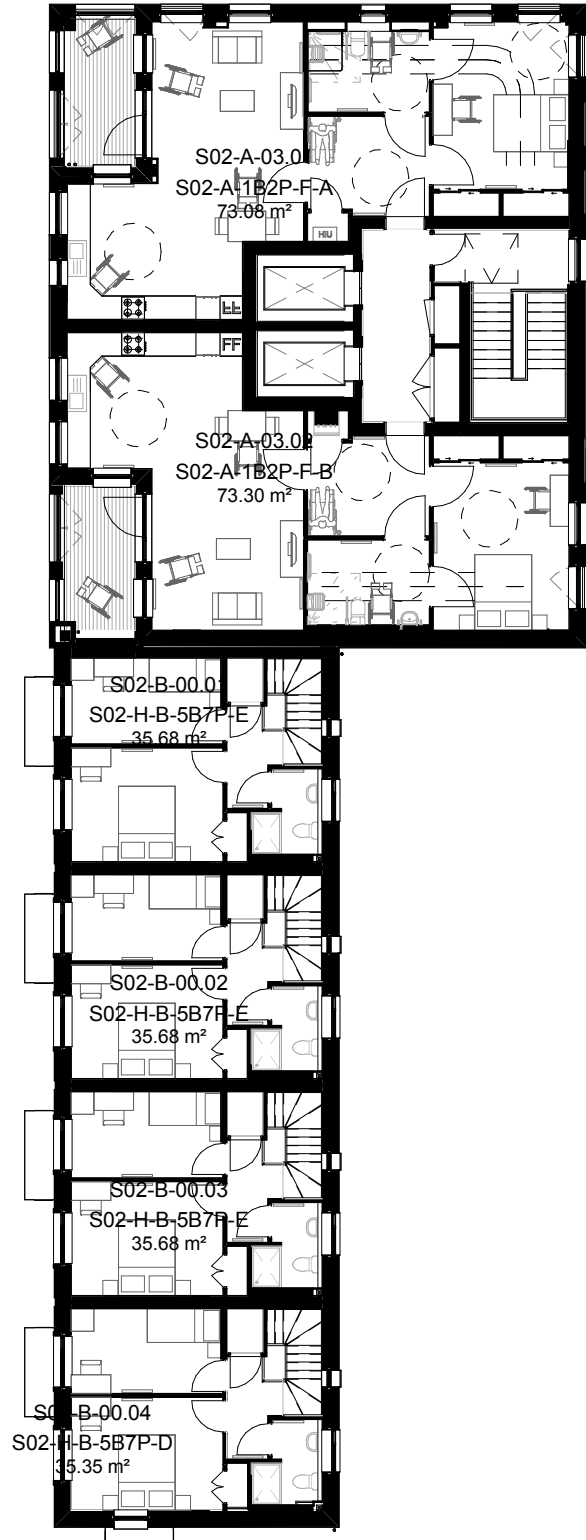
9. Brick soffit.

10. Metal railing on brick plinth.

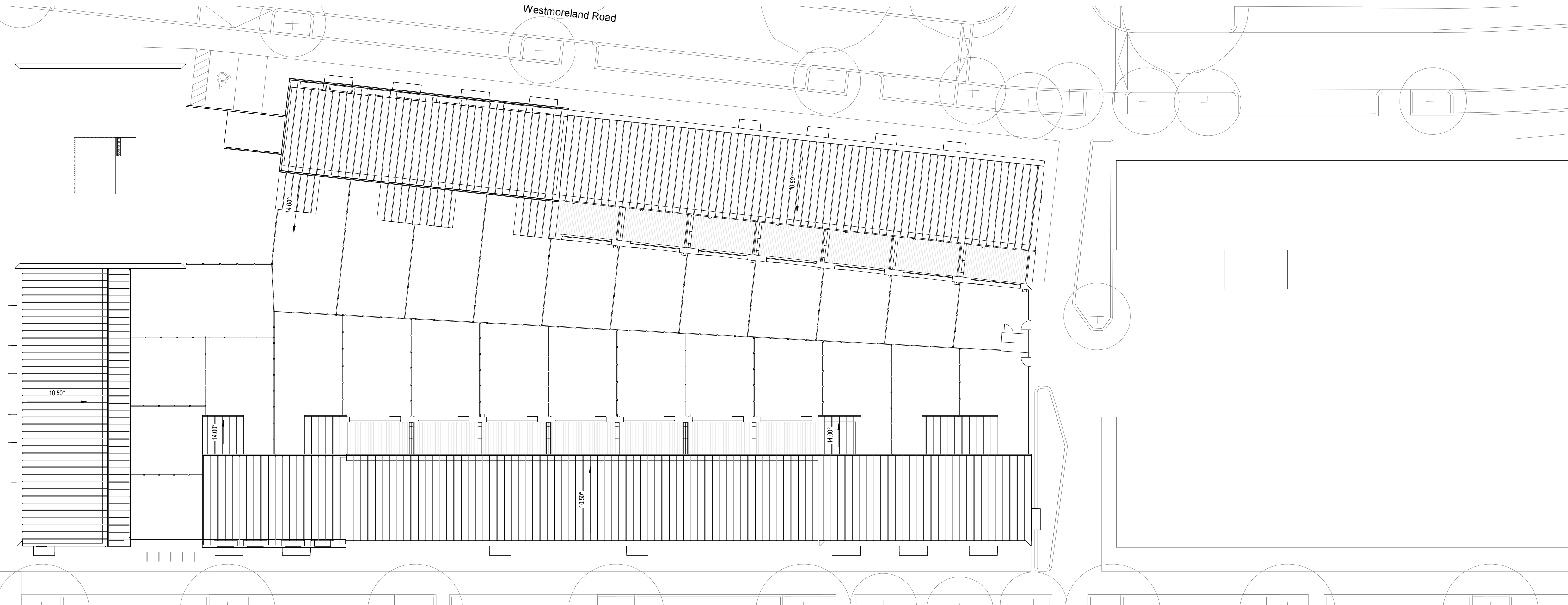
11. Aluminium door frame
Appearance - dark grey.

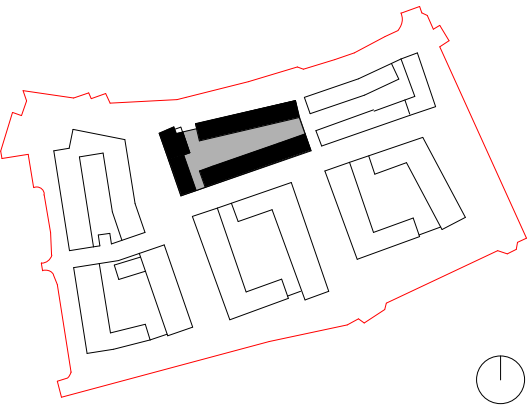
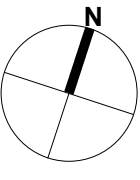



S02B - 5 bed house

1 Planning - GA 3
1 : 200



2 Planning - Roof Plan
1 : 200



<table><tr><th>rev</th><th>date</th><th>drawn</th><th>description</th></tr><tr><td>-</td><td>2014</td><td>MDR</td><td>Initial application</td></tr><tr><td>A</td><td>30.01.15</td><td>MDR</td><td>Minor changes to architectural design and number of units</td></tr><tr><td>B</td><td>27.06.17</td><td></td><td>Section 73 application</td></tr><tr><td>C</td><td>29.10.17</td><td></td><td>Section 73 application - revised</td></tr></table>	rev	date	drawn	description	-	2014	MDR	Initial application	A	30.01.15	MDR	Minor changes to architectural design and number of units	B	27.06.17		Section 73 application	C	29.10.17		Section 73 application - revised	<p>Notes: -</p> <p>Do not scale from drawings unless by agreement with HTA. Use figured dimensions only. Drawing to be read in conjunction with other relevant consultant information. This drawing is the copyright of HTA Design LLP and must not be copied or reproduced in part, or in whole, without the express permission of HTA Design LLP.</p> <p>This Tender drawing/document describes HTA Design LLP's concept design intent to be achieved by the Design and Build Contractor and any construction proposals shown herein are indicative only. The detailed design resolution and specification of the construction, including the selection and specification of materials and finishes, shall be carried out by the Design and Build Contractor and/or their appointed design consultants and/or specialist subcontractors to achieve the design intent and shall comply with the Employer's Requirements and the requirements of the Building Regulations, the CDM Regulations 2015 and any other relevant health and safety legislation and follow the guidance in any associated approved documents.</p>	<p>Legend:</p>	<div></div>	<table><tr><td colspan="2">Third & Fourth Floor</td><td colspan="2">NHH-FDS_HTA-A_DR_S02-103</td><td>C</td></tr><tr><td colspan="2">drawing title Block ABCD</td><td colspan="2">drawing number</td><td>revision</td></tr><tr><td colspan="2">client / job name</td><td colspan="2">job reference</td><td>scale</td></tr><tr><td colspan="2">Notting Hill Housing</td><td colspan="2">NHH-FDS</td><td>1 : 200 @ A1</td></tr><tr><td colspan="2">Aylesbury S02</td><td colspan="2"></td><td>AWF</td></tr><tr><td colspan="2"></td><td colspan="2">0m 4m 8m 12m 16m 20m</td><td></td></tr><tr><td colspan="2"></td><td colspan="2">78 Chamber Street London UK E1 8BL P (020) 7485 8555 F (020) 7485 1232 info@hta.co.uk</td><td>FOR PLANNING</td></tr></table>	Third & Fourth Floor		NHH-FDS_HTA-A_DR_S02-103		C	drawing title Block ABCD		drawing number		revision	client / job name		job reference		scale	Notting Hill Housing		NHH-FDS		1 : 200 @ A1	Aylesbury S02				AWF			0m 4m 8m 12m 16m 20m					78 Chamber Street London UK E1 8BL P (020) 7485 8555 F (020) 7485 1232 info@hta.co.uk		FOR PLANNING
rev	date	drawn	description																																																								
-	2014	MDR	Initial application																																																								
A	30.01.15	MDR	Minor changes to architectural design and number of units																																																								
B	27.06.17		Section 73 application																																																								
C	29.10.17		Section 73 application - revised																																																								
Third & Fourth Floor		NHH-FDS_HTA-A_DR_S02-103		C																																																							
drawing title Block ABCD		drawing number		revision																																																							
client / job name		job reference		scale																																																							
Notting Hill Housing		NHH-FDS		1 : 200 @ A1																																																							
Aylesbury S02				AWF																																																							
		0m 4m 8m 12m 16m 20m																																																									
		78 Chamber Street London UK E1 8BL P (020) 7485 8555 F (020) 7485 1232 info@hta.co.uk		FOR PLANNING																																																							



1 South Elevation
1 : 200



2 North Elevation
1 : 200

rev	date	drawn	description		Notes: -		Legend:		Elevations		NHH-FDS_HTA-A_DR_S02-130		C	
-	2014	MD8	Initial application		Do not scale from drawings unless by agreement with HTA. Use figured dimensions only. Drawing to be read in conjunction with other relevant consultant information. This drawing is the copyright of HTA Design LLP and must not be copied or reproduced in part, or in whole, without the express permission of HTA Design LLP.				drawing title Block AB		drawing number		revision	
A	30.01.15	MD8	Minor changes to architectural design and number of units						client / job name		job reference		scale	
B	27.06.17		Section 73 application						Notting Hill Housing		NHH-FDS		1 : 200 @ A1	
C	25.10.17		Section 73 application - revised						Aylesbury S02				AWF	
					This Tender drawing/document describes HTA Design LLP's concept design intent to be achieved by the Design and Build Contractor and any construction proposals shown hereon are indicative only. The detailed design resolution and specification of the construction, including the selection and specification of materials and finishes, shall be carried out by the Design and Build Contractor and/or their appointed design consultants and/or specialist subcontractors to achieve the design intent and shall comply with the Employer's Requirements and the requirements of the Building Regulations, the CDM Regulations 2015 and any other relevant health and safety legislation and follow the guidance in any associated approved documents.									
											78 Chamber Street London UK E1 8BL P (020) 7485 8555 F (020) 7485 1232 info@hta.co.uk		FOR PLANNING	



1 Rear South Elevation
1 : 200



2 Rear North Elevation
1 : 200



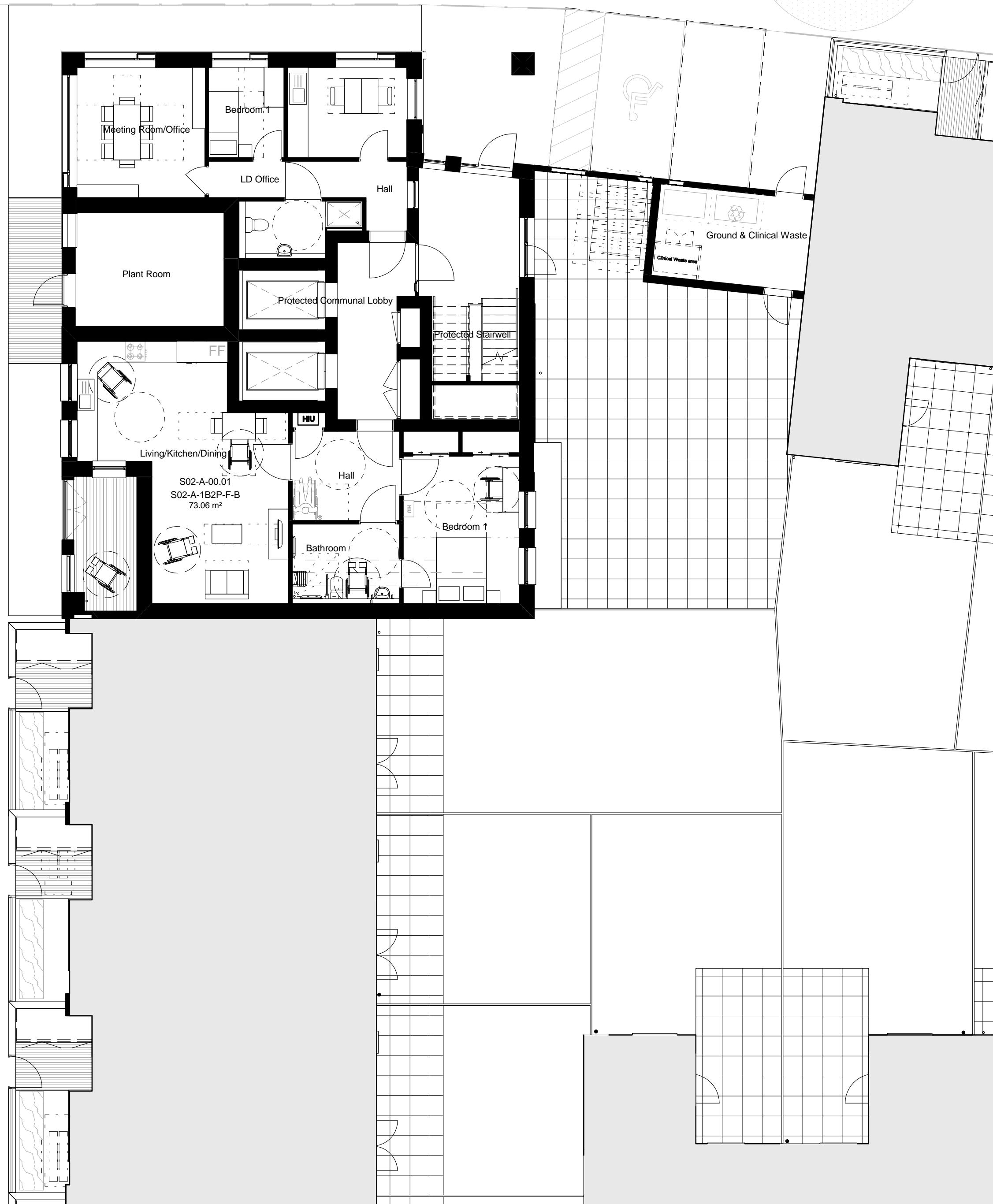
1 West Elevation
1 : 200



2 Rear East Elevation
1 : 200

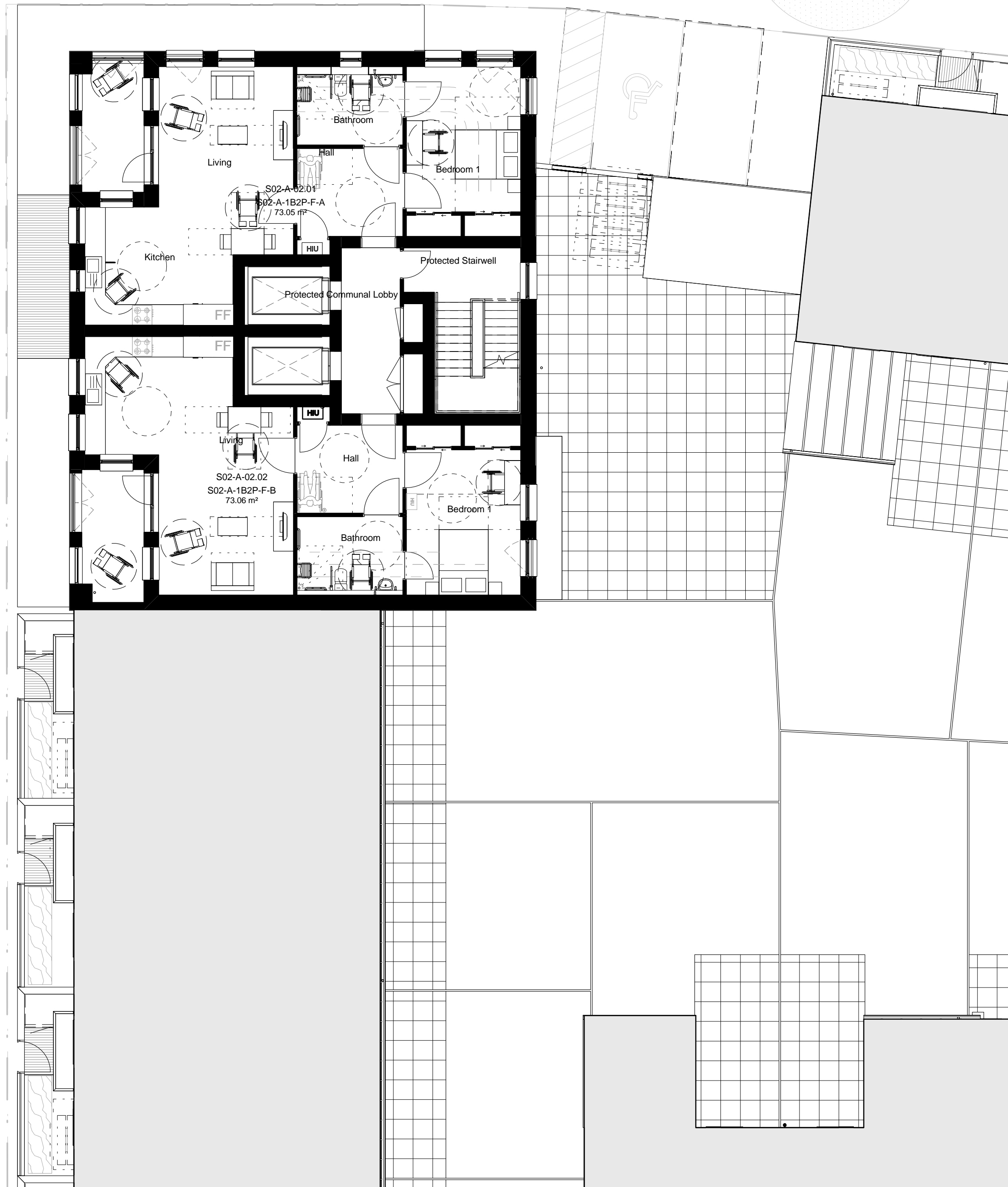


3 East Elevation
1 : 200



1 Planning - LD 0

1 : 100



2 Planning - LD 2

1 : 100

rev	date	drawn	description
-	2014	MDB	Initial application
A	30.01.15	MDB	Minor changes to architectural design and number of units
B	27.09.17		Section 73 application

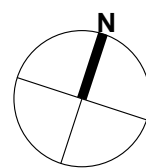
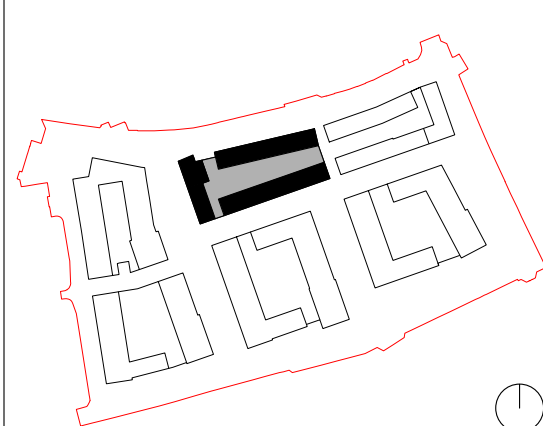
Notes: -

Do not scale from drawings unless by agreement with HTA. Use figured dimensions only. Check all dimensions on site prior to commencing the works. Drawing to be read in conjunction with other relevant consultant information.

This drawing is the copyright of HTA Design LLP, and must not be copied or reproduced in part, or in whole, without the express permission of HTA Design LLP.

This drawing is not for construction purposes and shows design intent only.

Legend:



Ground Floor/Typical Floor Plan NHH-FDS_HTA-A_DR_S02-300 B

drawing title Learning Disabilities Facility drawing number revision

client / job name Notting Hill Housing Aylesbury S02 job reference NHH-FDS scale 1 : 100 @ A1 drawn MDB

0m 2m 4m 6m 8m 10m



78 Chamber Street London UK E1 8BL
P (020) 7485 8555 F (020) 7485 1232 info@hta.co.uk

FOR PLANNING



1 : 50



1 : 54

1. Decorative brickwork to form cornice
2. Brickwork Type 6
Appearance - waterstruck / red
3. Aluminium window frame
Appearance - dark Sienna brown
4. Metal panel with decorative perforations
Appearance - dark Sienna brown
5. Horizontal band of brickwork
6. Wintergarden
7. Decorative/perforated ventilation panel to plant space
Appearance - dark Sienna brown

rev	date	drawn	description
-	2014	MDB	Initial application
A	30.01.15	MDB	Minor changes to architectural design and number of units
B	26.10.17		Section 73 application - revised

Do not scale from drawings unless by agreement with HTA. Use figured dimensions only. Drawing to be read in conjunction with other relevant consultant information. This drawing is the copyright of HTA Design LLP, and must not be copied or reproduced in part, or in whole, without the express permission of HTA Design LLP.

This Tender drawing/document describes HTA Design LLP's concept design intent to be achieved by the Design and Build Contractor and any construction proposals shown hereon are indicative only. The detailed design resolution and specification of the construction, including the selection and specification of materials and finishes, shall be carried out by the Design and Build Contractor and/or their appointed design consultants and/or specialist subcontractors to achieve the design intent and shall comply with the Employer's Requirements and the requirements of the Building Regulations, the CDM Regulations 2015 and any other relevant health and safety legislation and follow the guidance in any associated approved documents.

Legend:

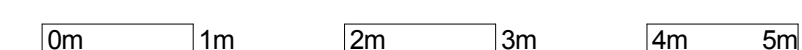
NHH-FDS HTA-A DR S02-140

B

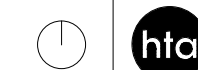
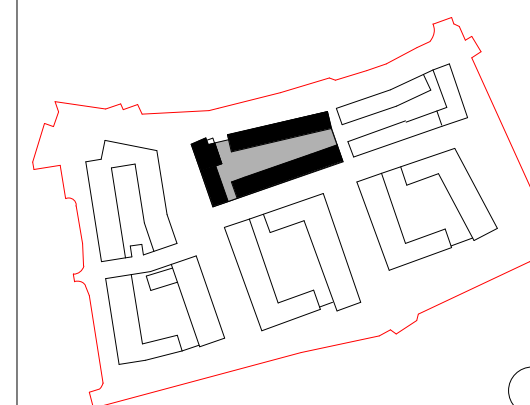
revision

client / job name
**Notting Hill Housing
Aylesbury S02**

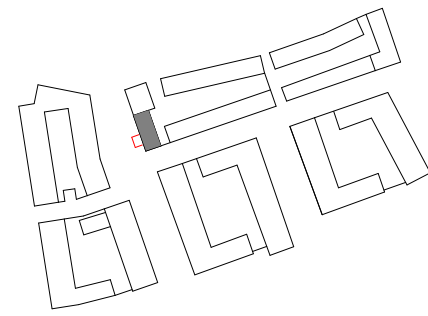
scale
1 : 50 @ A1

drawn
AWF

FOR PLANNING



78 Chamber Street London UK E1 8BL
P (020) 7485 8555 F (020) 7485 1232 info@hta.co.uk



1 S02B - 5 bed House Red
1 : 50

- Decorative soldier brickwork below metal coping - Brickwork Type 6
- Brickwork Type 6
Appearance - waterstruck / red
- Aluminium window frame
Appearance - dark Sienna brown
- Reconstituted stone projecting window surround
- Metal projecting bay window, secret fixed frame, soffit & fascia panels
Appearance - dark Sienna brown
- Brick soffit
- Metal railing on brick plinth
- Aluminium door frame
Appearance - dark Sienna brown
- Soldier brickwork above entrance - Brickwork Type 6

2 S02B - 5 bed House Red
1 : 50



3 S02B - 5 bed House Grey
1 : 50

- Metal standing seam roof
Appearance - dark grey
- Decorative soldier brickwork below metal coping - Brickwork Type 4
- Brickwork Type 4
Appearance - waterstruck / buff colour
- Aluminium window frame
Appearance - dark grey
- Projecting window surround type 2
Appearance - black-blue-variegated clinker
- Metal projecting bay window, secret fixed frame, soffit & fascia panels
Appearance - dark grey
- Brick soffit
- Metal railing on brick plinth
- Aluminium door frame
Appearance - dark grey
- Soldier brickwork above entrance - Brickwork Type 4

4 S02B - 5 bed House Grey
1 : 50